

Economic Index Update

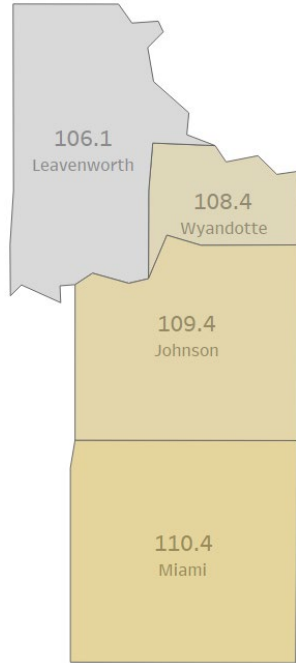
Healthy-Wealthy-Wise

Leavenworth County

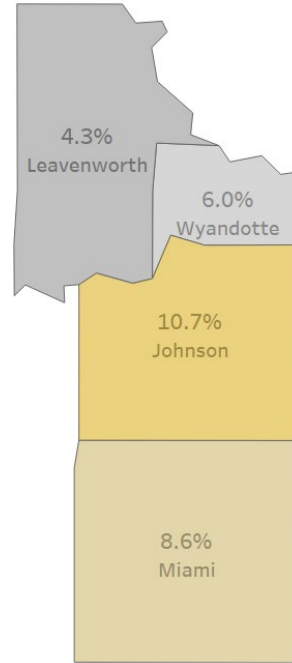
Jonathan Norris

Current Index

2023 Current Index

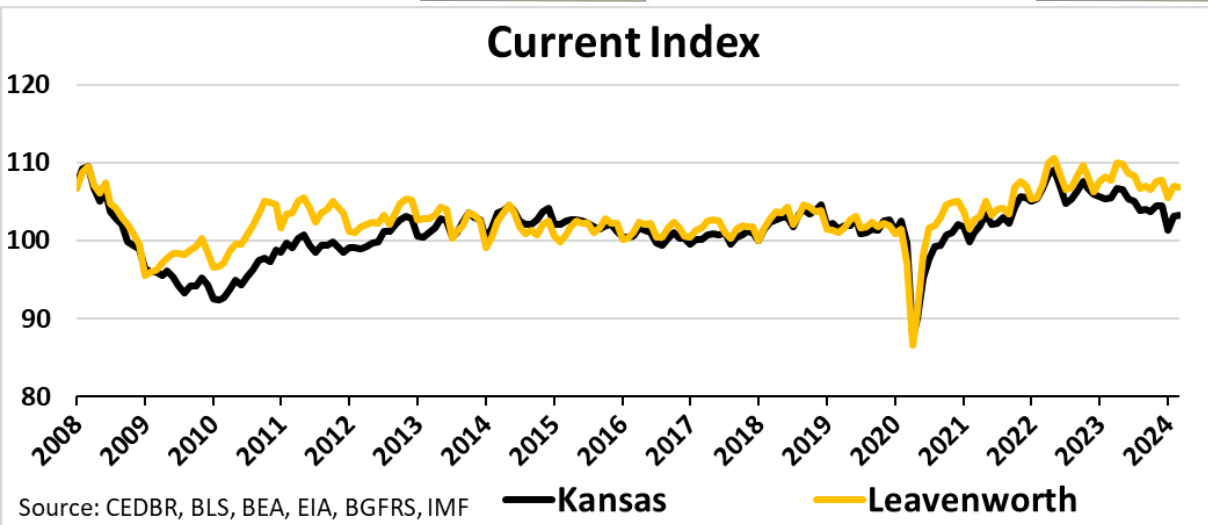


Y/Y Current Index Growth – 2022-23

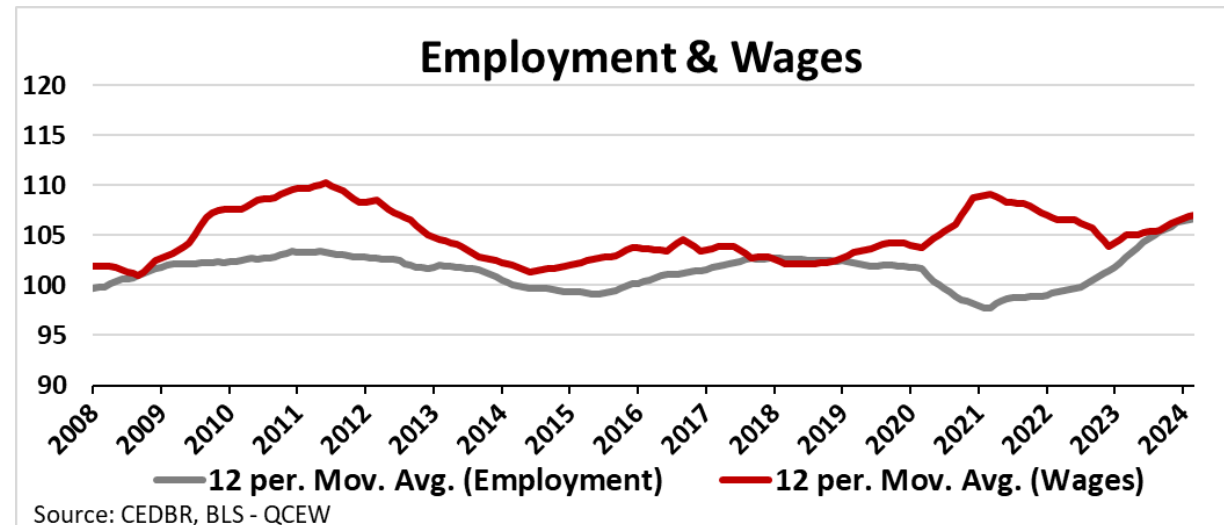


- Regionally, all counties are better off than in 2018 (the base year)
- Leavenworth County tends to follow state trends, but has been **more resilient since 2022**
- Slight slowdown since 2022, but employment and wages are strong**

Current Index



Employment & Wages



Household Index

Healthy 1/3

Low Birthweight
(1/3)

Obesity
(1/3)

Preventable
Hospitalizations
(1/3)

Wealthy 1/3

GINI Index
(1/3)

Household Income
(1/3)

Poverty
(1/3)

Wise 1/3

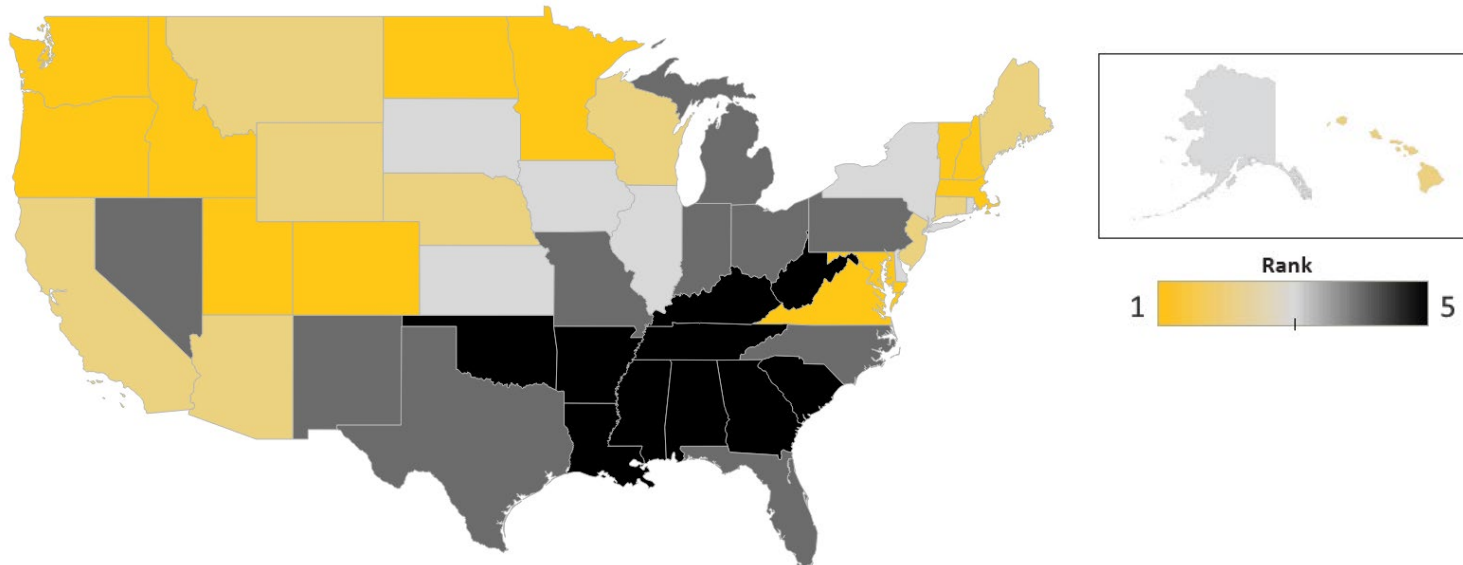
Associate's
(1/3)

Bachelor's
(1/3)

Advanced
(1/3)

Healthy, Wealthy, and Wise – Kansas ranks near the national median

U.S. Healthy-Wealthy-Wise Index, 2024



- **Healthy** – Near Median
 - **High obesity**
 - **Low birthweights**
- **Wealthy** – Near Median
 - **Low wealth polarization**
 - **Lagging incomes**
- **Wise** – Above Median
 - **Associate and Bachelor**

Kansas Healthy-Wealthy-Wise Index 2024

		Rank	Value
Healthy	Obesity Rate	4	35.8%
	Low Birthweight Rate	2	7.2%
	Preventable Hospitalization Rate	3	2.7%
Wealthy	Gini Coefficient	2	0.46
	Median Household Income	4	\$69,747
	Poverty Rate	3	11.6%
Wise	Associate Degrees	2	31.4%
	Bachelor Degrees	2	21.7%
	Advanced Degrees	3	13.0%

Neighboring State Ranks

State	HWW Index	Healthy	Wealthy	Wise
Colorado	1	2	1	1
Kansas	3	3	3	2
Missouri	4	4	4	4
Nebraska	2	3	2	2
Oklahoma	5	4	4	5

Midwest Region

- Colorado and Nebraska **lead**
- Missouri and Oklahoma **lag**

Leavenworth County ranked among the **top 20%** in household conditions

Healthy-Wealthy-Wise 2024				
County	Healthy-Wealthy-Wise Index	Healthy	Wealthy	Wise
Johnson	1	1	1	1
Leavenworth	1	3	1	1
Miami	1	2	1	2
Wyandotte	5	5	4	5

- **Healthy:** Near Median
- **Wealthy:** **Top 20%**
- **Wise:** **Top 20%**

- **The KC region has strong household indicators**, other than Wyandotte County
- Strong regional labor force interconnection

Household Index

Healthy 1/3

Low Birthweight
(1/3)

Obesity
(1/3)

Preventable
Hospitalizations
(1/3)

Wealthy 1/3

GINI Index
(1/3)

Household Income
(1/3)

Poverty
(1/3)

Wise 1/3

Associate's
(1/3)

Bachelor's
(1/3)

Advanced
(1/3)

Household health impacts the economy in many ways



People

Lost Personal Income

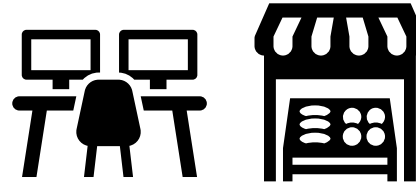
- Time Off Work
- Lower Job Security
- Lost Advancement Opportunities

Poorer Quality of Life

- Mental and Physical Health

Higher Personal Costs

- Out-of-pocket health costs
- Medications



Firms

Productivity Issues

Higher Employer Costs

- Insurance and Healthcare

Tighter Labor Markets

- Higher Demand for Labor

Discouraged Investment

- Firms May Relocate or Close
- Deterred Investors



Government

Burden on Public Systems

- Healthcare and Social Services

Decreased Revenue

- Less Productive Workforce
- Loss of Firms
- Difficulty Attracting Investment

Economic Stagnation

Healthy – Leavenworth ranks near the state median

Low Birthweight Rate

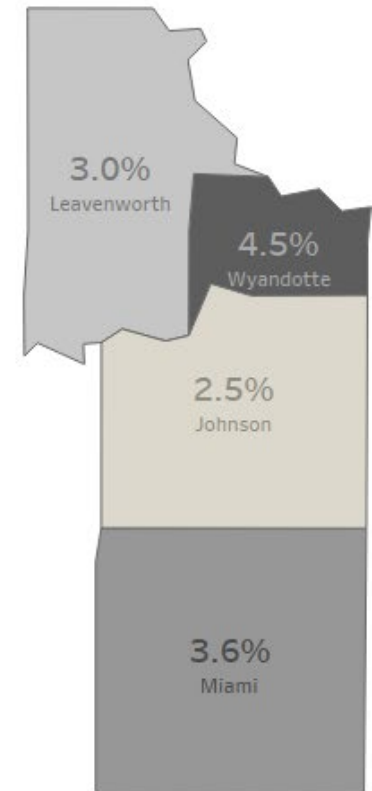
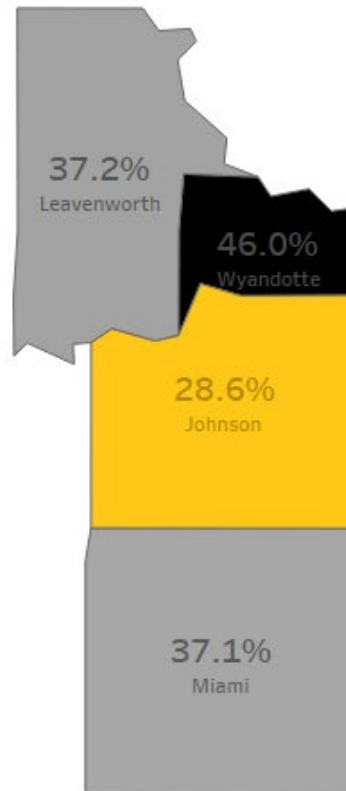
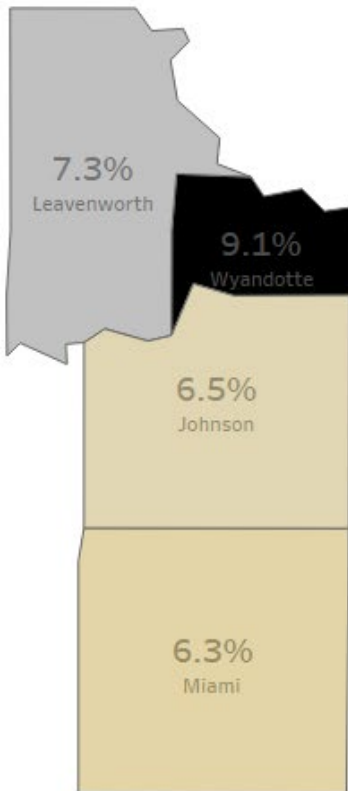
Obesity Rate

Preventable Hospitalizations Rate

	2018	2022	Growth
Kansas	7.0%	7.2%	0.2%
Leavenworth	6.8%	7.3%	0.5%

	2018	2022	Growth
Kansas	32.4%	35.8%	3.4%
Leavenworth	34.8%	37.2%	2.4%

	2018	2022	Growth
Kansas	5.1%	2.7%	-2.4%
Leavenworth	4.6%	3.0%	-1.6%



Household Index

Healthy
1/3

Low Birthweight
(1/3)

Obesity
(1/3)

Preventable
Hospitalizations
(1/3)

Wealthy
1/3

GINI Index
(1/3)

Household Income
(1/3)

Poverty
(1/3)

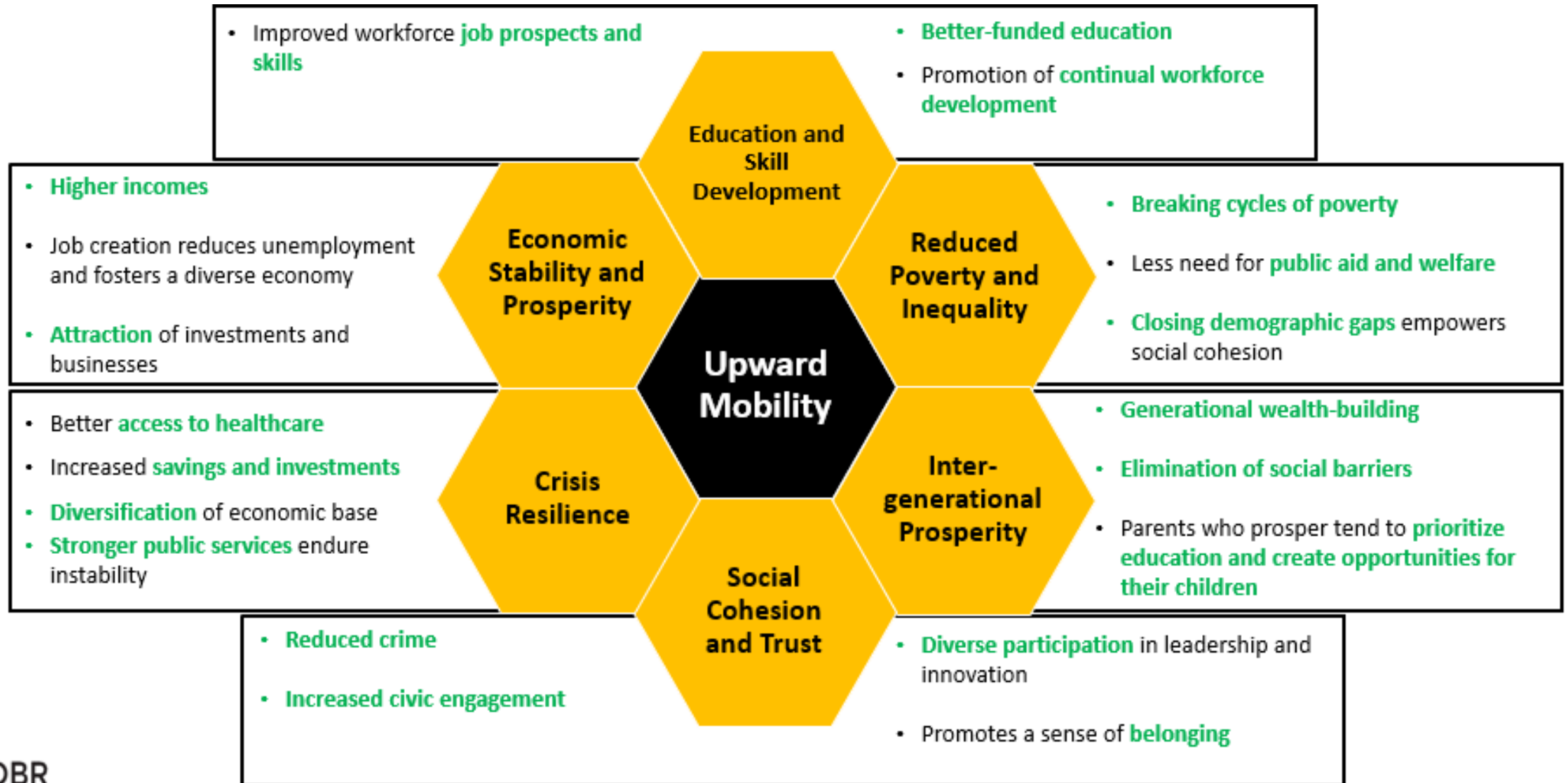
Wise
1/3

Associate's
(1/3)

Bachelor's
(1/3)

Advanced
(1/3)

Upward mobility promotes a strong community, key for an economy to flourish



Wealthy – Leavenworth County ranks in the top 20%

Gini Coefficient

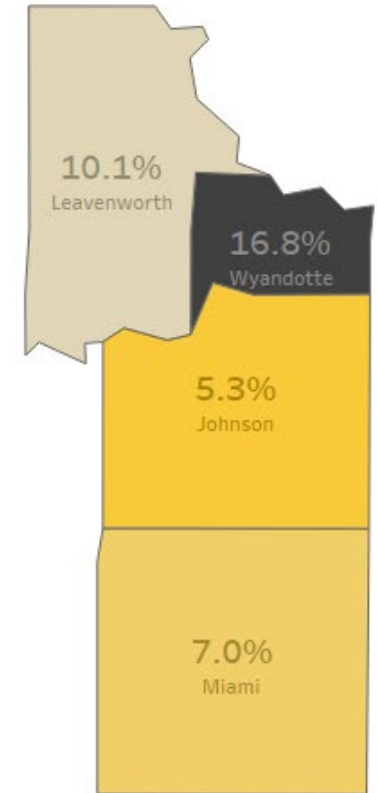
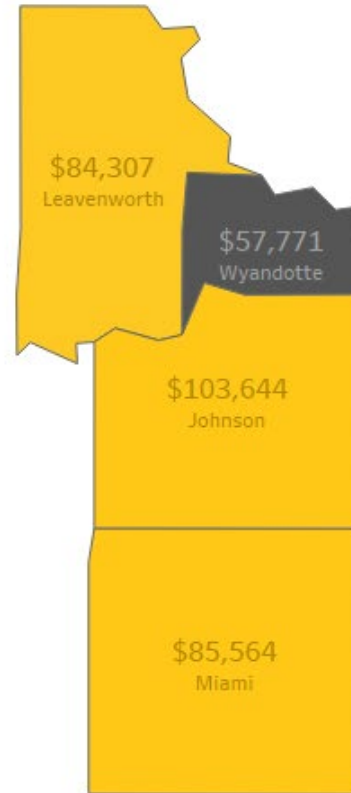
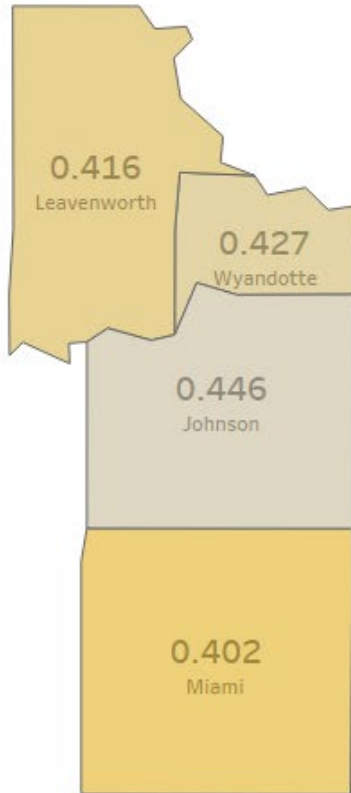
	2018	2022	Growth
Kansas	0.458	0.458	-0.1%
Leavenworth	0.424	0.416	-1.8%

Median Household Income

	2018	2022	Growth
Kansas	\$ 57,422	\$ 69,747	21.5%
Leavenworth	\$ 71,174	\$ 84,307	18.4%

Poverty Rate

	2018	2022	Growth
Kansas	12.4%	11.6%	-0.8%
Leavenworth	9.0%	10.1%	1.1%



Household Index

Healthy
1/3

Low Birthweight
(1/3)

Obesity
(1/3)

Preventable
Hospitalizations
(1/3)

Wealthy
1/3

GINI Index
(1/3)

Household Income
(1/3)

Poverty
(1/3)

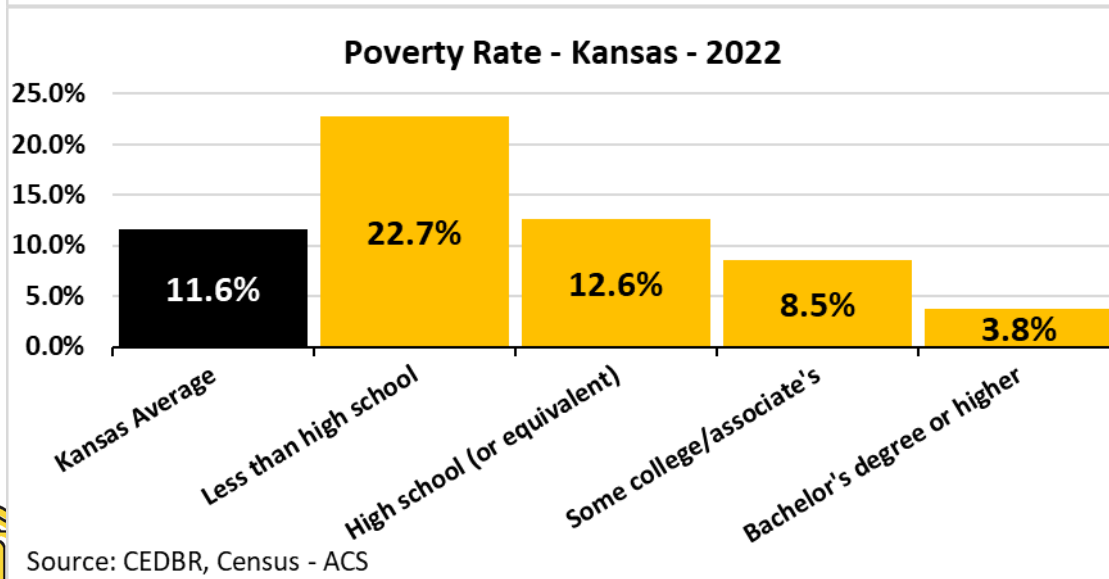
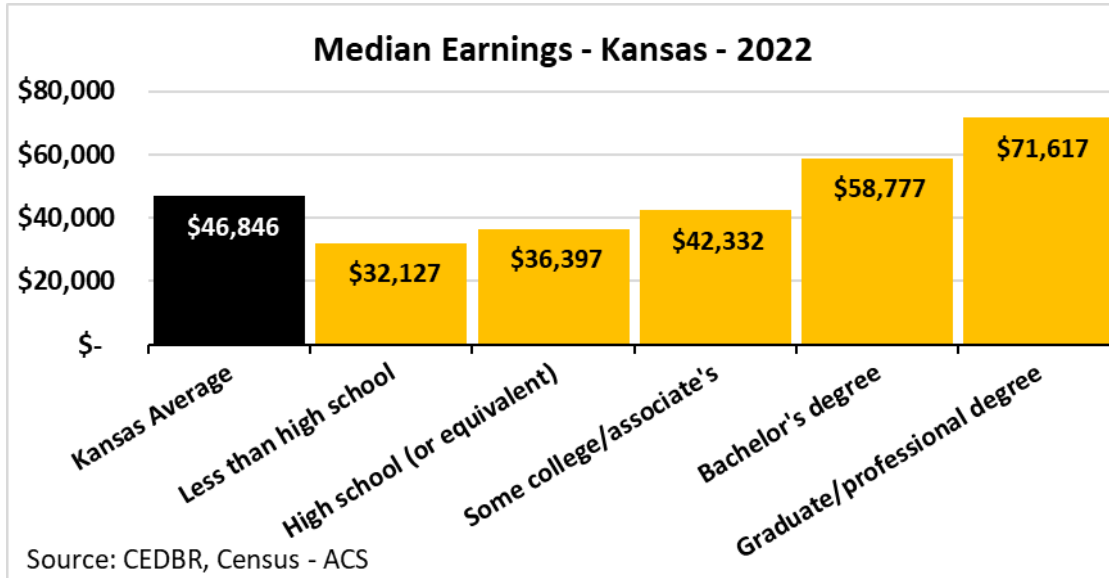
Wise
1/3

Associate's
(1/3)

Bachelor's
(1/3)

Advanced
(1/3)

Educational Attainment Drives...



Increased Productivity, Innovation, and Resilience

Attraction of Higher-Paying Jobs and Industries

Higher Incomes and Wages

Reduced Unemployment and Underemployment

Reduced Poverty and Inequality

Increased Local Spending and Economic Activity

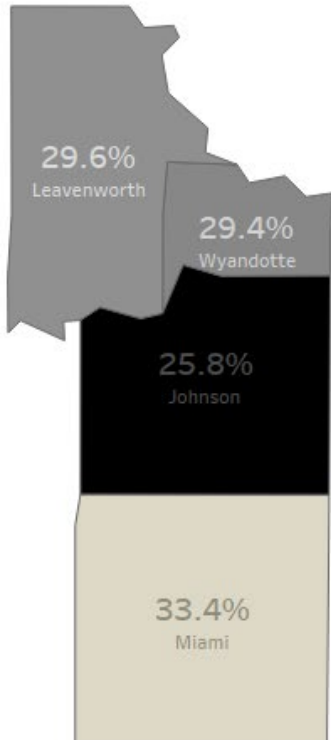


Wise – strongly growing bachelor and advanced degrees

Total Education	2018	2022	Growth
Kansas	64.7%	66.1%	1.4%
Leavenworth	63.2%	65.1%	1.9%

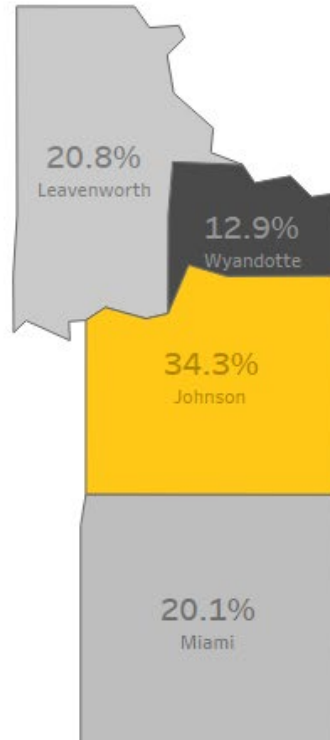
Some College and Associate Degrees

	2018	2022	Growth
Kansas	31.8%	31.4%	-0.4%
Leavenworth	31.6%	29.6%	-2.0%



Bachelor Degrees

	2018	2022	Growth
Kansas	20.8%	21.7%	0.9%
Leavenworth	18.2%	20.8%	2.6%



Advanced Degrees

	2018	2022	Growth
Kansas	12.1%	13.0%	0.9%
Leavenworth	13.4%	14.7%	1.3%

