

Economic Index Update

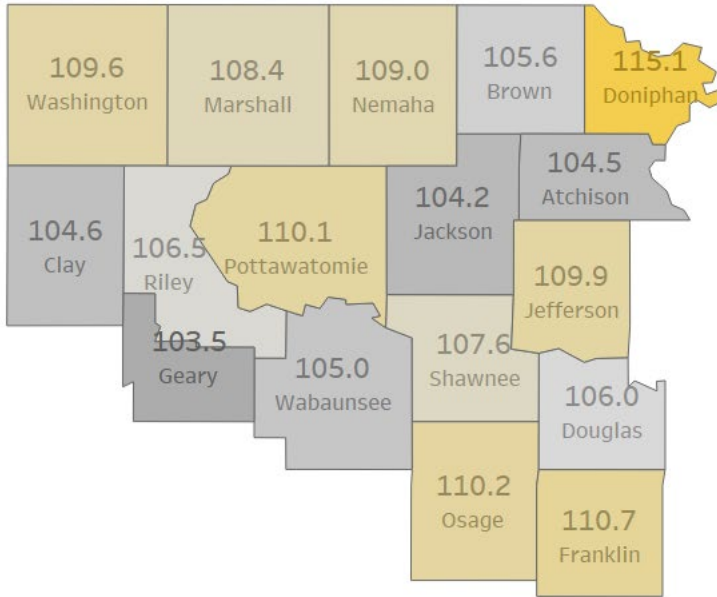
Healthy-Wealthy-Wise

Franklin County

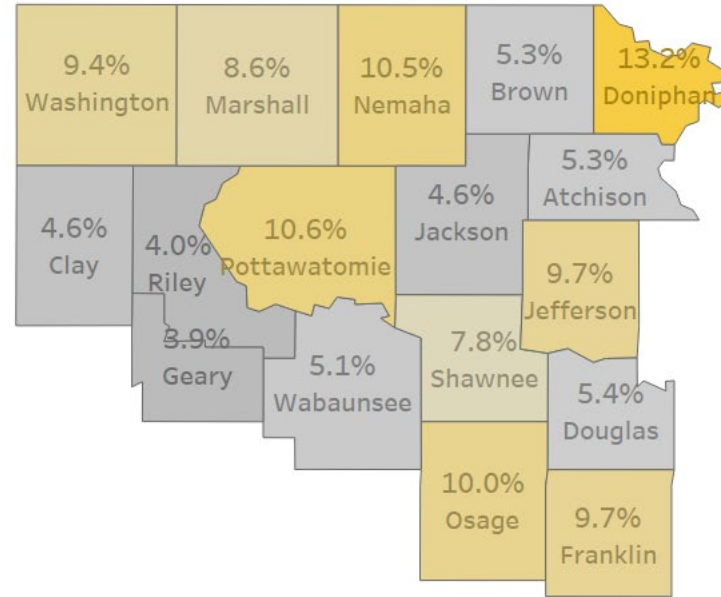
Jonathan Norris

Current Index

2023 Current Index

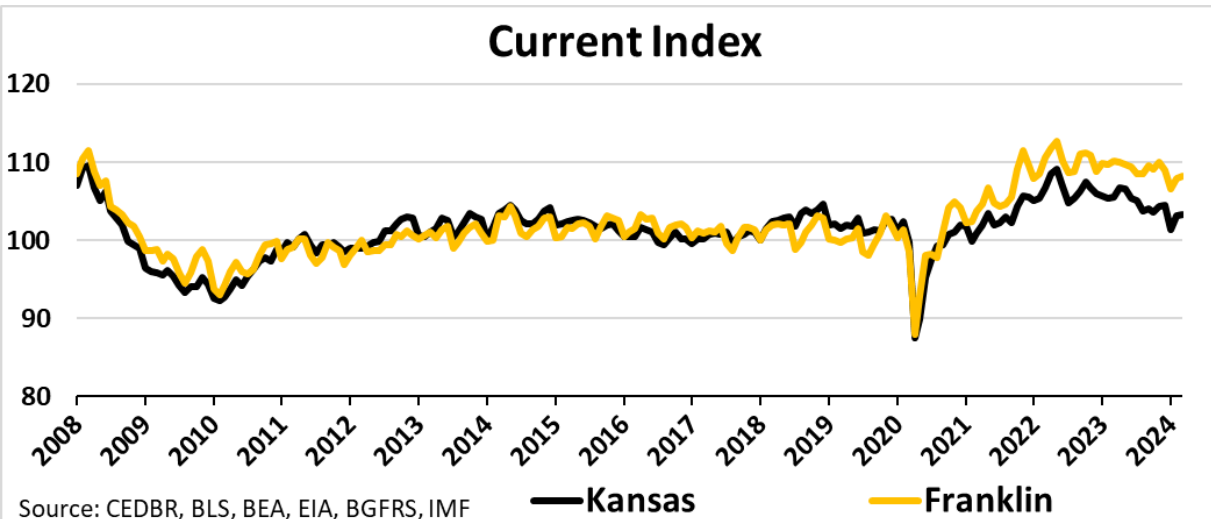


Y/Y Current Index Growth – 2022-23

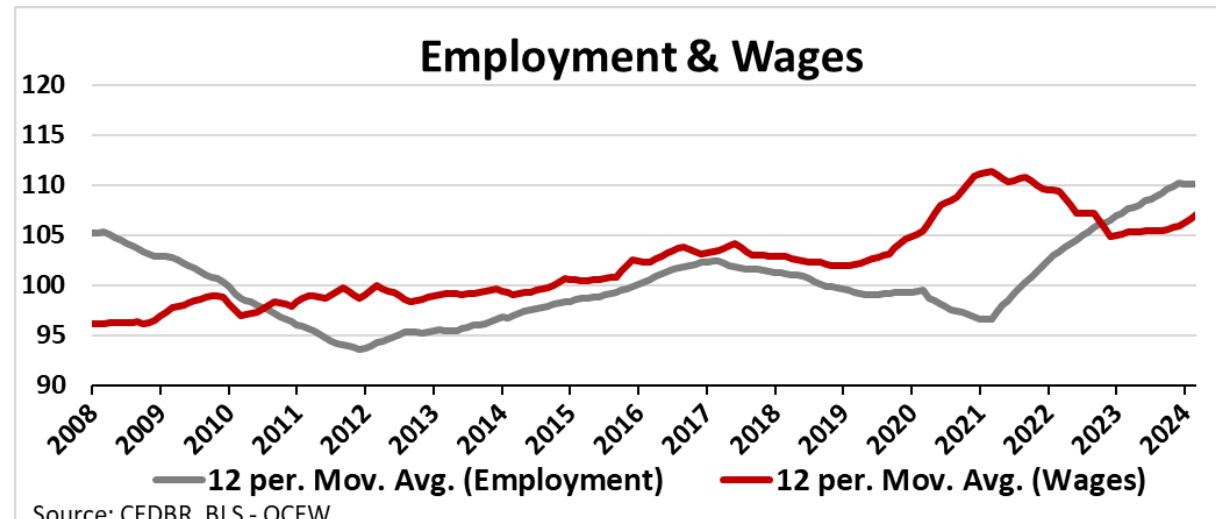


- Regionally, all counties are better off than in 2018 (the base year)
- Franklin County tends to follow state trends, but has been **more resilient since 2022**
- Slight slowdown in real wages since 2022, but employment is strong**

Current Index



Employment & Wages



Household Index

Healthy 1/3

Low Birthweight
(1/3)

Obesity
(1/3)

Preventable
Hospitalizations
(1/3)

Wealthy 1/3

GINI Index
(1/3)

Household Income
(1/3)

Poverty
(1/3)

Wise 1/3

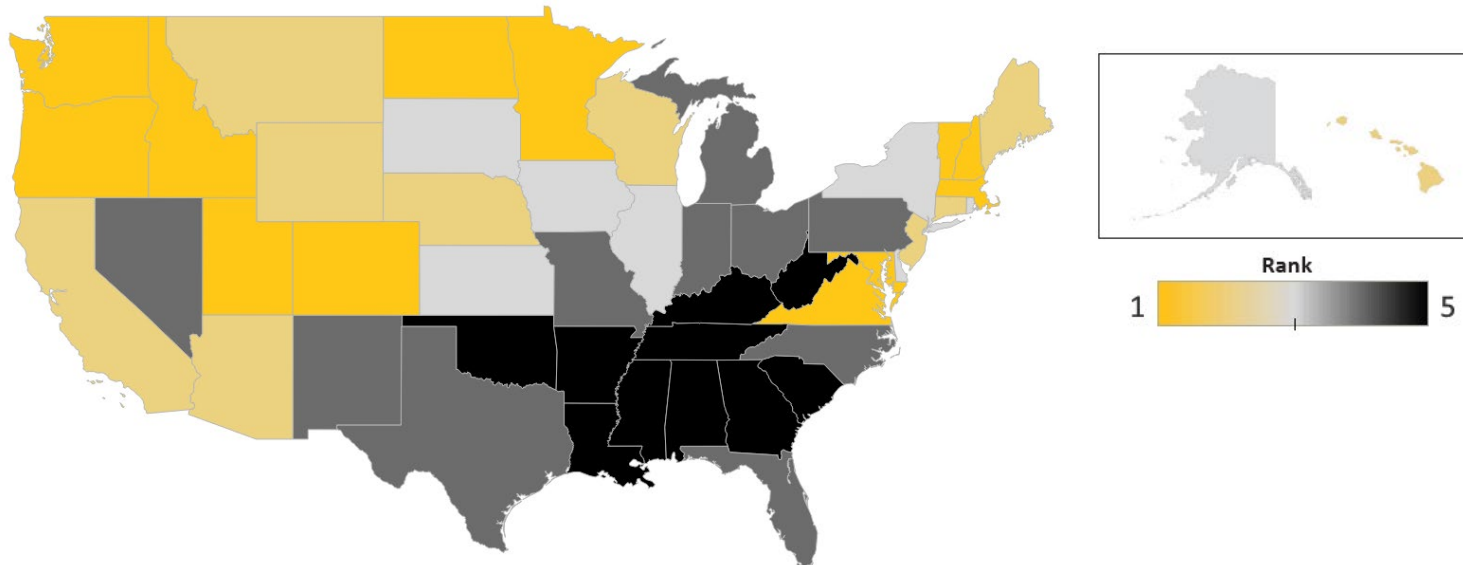
Associate's
(1/3)

Bachelor's
(1/3)

Advanced
(1/3)

Healthy, Wealthy, and Wise – Kansas ranks near the national median

U.S. Healthy-Wealthy-Wise Index, 2024



- **Healthy** – Near Median
 - **High obesity**
 - **Low birthweights**
- **Wealthy** – Near Median
 - **Low wealth polarization**
 - **Lagging incomes**
- **Wise** – Above Median
 - **Associate and Bachelor**

Kansas Healthy-Wealthy-Wise Index 2024

		Rank	Value
Healthy	Obesity Rate	4	35.8%
	Low Birthweight Rate	2	7.2%
	Preventable Hospitalization Rate	3	2.7%
Wealthy	Gini Coefficient	2	0.46
	Median Household Income	4	\$69,747
	Poverty Rate	3	11.6%
Wise	Associate Degrees	2	31.4%
	Bachelor Degrees	2	21.7%
	Advanced Degrees	3	13.0%

Neighboring State Ranks

State	HWW Index	Healthy	Wealthy	Wise
Colorado	1	2	1	1
Kansas	3	3	3	2
Missouri	4	4	4	4
Nebraska	2	3	2	2
Oklahoma	5	4	4	5

Midwest Region

- Colorado and Nebraska **lead**
- Missouri and Oklahoma **lag**

Franklin County ranked **below the median** in household conditions

Healthy-Wealthy-Wise 2024				
County	Healthy-Wealthy-Wise Index	Healthy	Wealthy	Wise
Atchison	5	3	4	5
Brown	5	3	4	4
Clay	4	5	2	3
Doniphan	3	3	2	3
Douglas	1	1	4	1
Franklin	4	5	1	4
Geary	1	2	3	1
Jackson	2	2	1	4
Jefferson	1	1	1	3
Marshall	2	2	3	3
Nemaha	2	1	2	4
Osage	4	5	1	5
Pottawatomie	1	1	1	1
Riley	2	1	5	1
Shawnee	3	4	3	2
Wabaunsee	1	1	1	3
Washington	5	5	2	5

- **Healthy:** Bottom 20%
- **Wealthy:** Top 20%
- **Wise:** Below Median
- Significant disparities in household conditions across the region
- Strong regional labor force interconnection

Household Index

Healthy 1/3

Low Birthweight
(1/3)

Obesity
(1/3)

Preventable
Hospitalizations
(1/3)

Wealthy 1/3

GINI Index
(1/3)

Household Income
(1/3)

Poverty
(1/3)

Wise 1/3

Associate's
(1/3)

Bachelor's
(1/3)

Advanced
(1/3)

Household health impacts the economy in many ways



People

Lost Personal Income

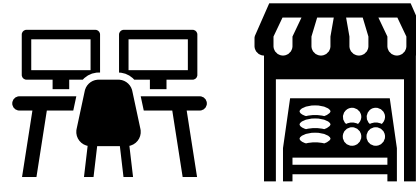
- Time Off Work
- Lower Job Security
- Lost Advancement Opportunities

Poorer Quality of Life

- Mental and Physical Health

Higher Personal Costs

- Out-of-pocket health costs
- Medications



Firms

Productivity Issues

Higher Employer Costs

- Insurance and Healthcare

Tighter Labor Markets

- Higher Demand for Labor

Discouraged Investment

- Firms May Relocate or Close
- Deterred Investors



Government

Burden on Public Systems

- Healthcare and Social Services

Decreased Revenue

- Less Productive Workforce
- Loss of Firms
- Difficulty Attracting Investment

Economic Stagnation

Healthy – Franklin County ranks in the bottom 20%

Low Birthweight Rate

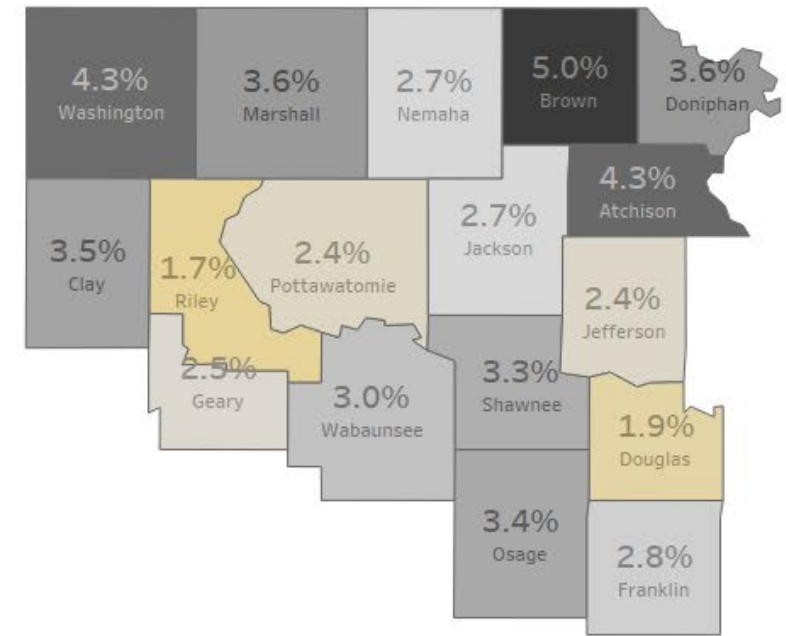
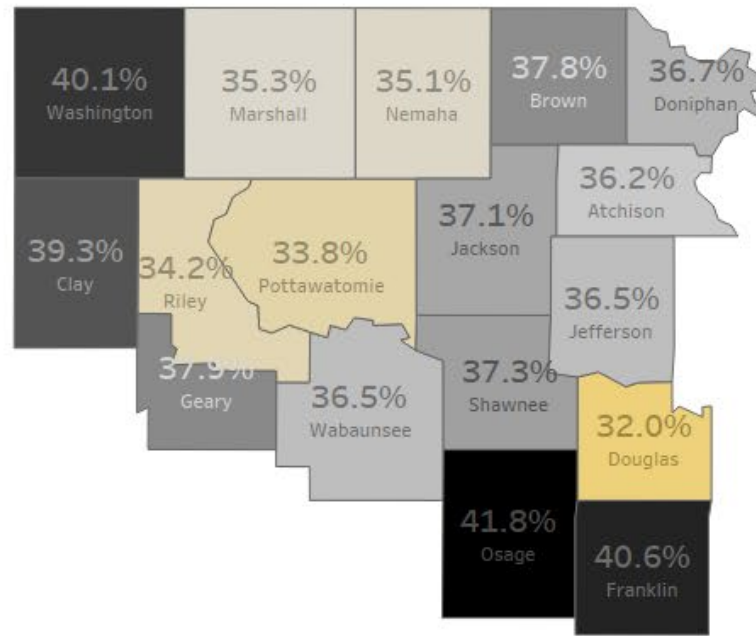
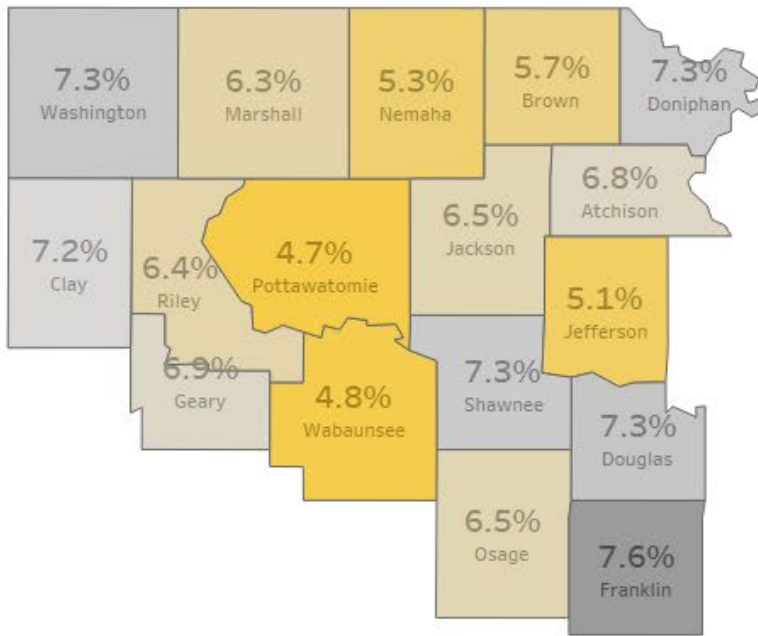
	2018	2022	Growth
Kansas	7.0%	7.2%	0.2%
Franklin	6.4%	7.6%	1.2%

Obesity Rate

	2018	2022	Growth
Kansas	32.4%	35.8%	3.4%
Franklin	33.8%	40.6%	6.8%

Preventable Hospitalizations Rate

	2018	2022	Growth
Kansas	5.1%	2.7%	-2.4%
Franklin	5.1%	2.8%	-2.2%



Household Index

Healthy
1/3

Low Birthweight
(1/3)

Obesity
(1/3)

Preventable
Hospitalizations
(1/3)

Wealthy
1/3

GINI Index
(1/3)

Household Income
(1/3)

Poverty
(1/3)

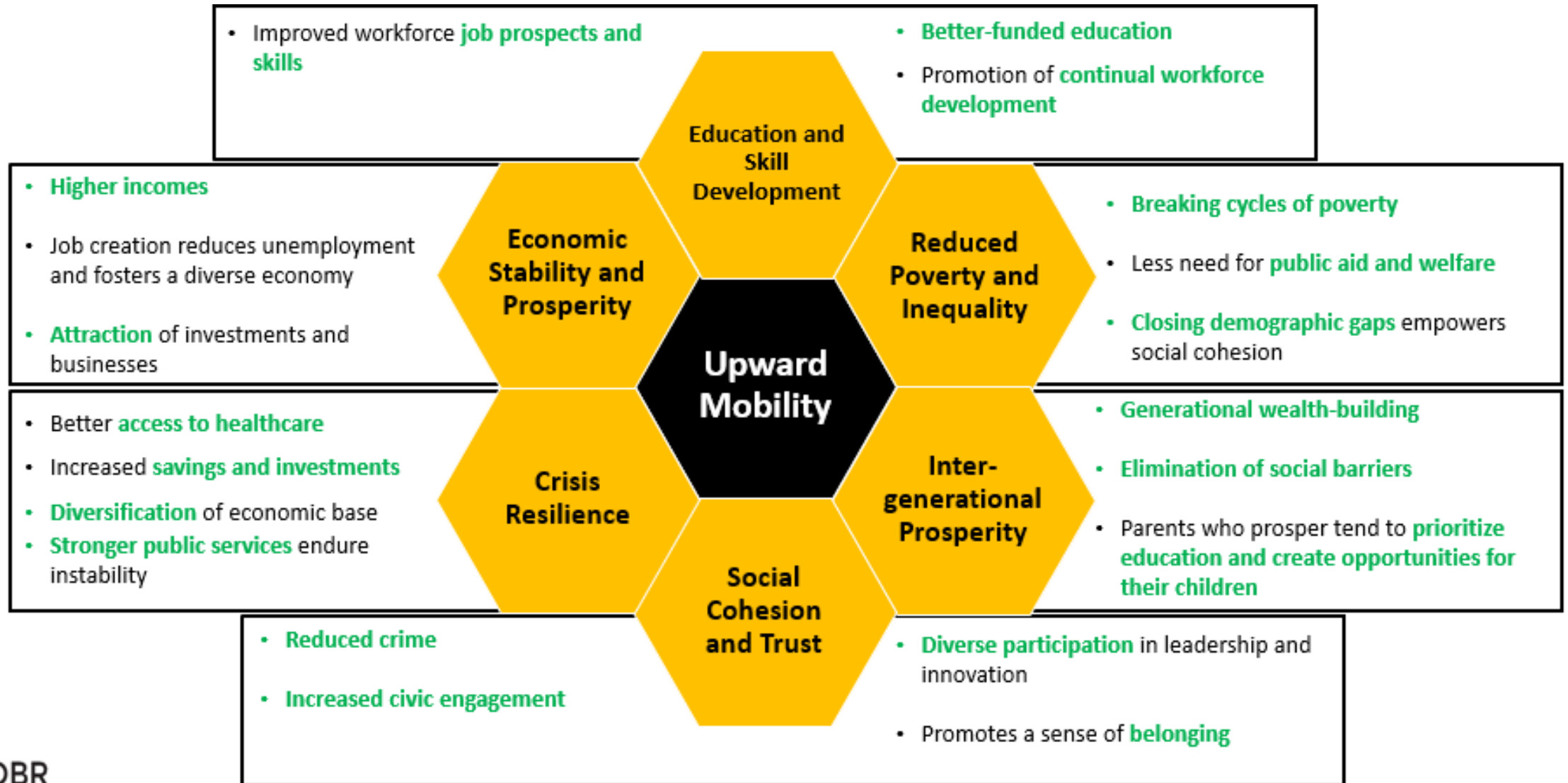
Wise
1/3

Associate's
(1/3)

Bachelor's
(1/3)

Advanced
(1/3)

Upward mobility promotes a strong community, key for an economy to flourish



Wealthy – Franklin County ranks in the top 20%

Gini Coefficient

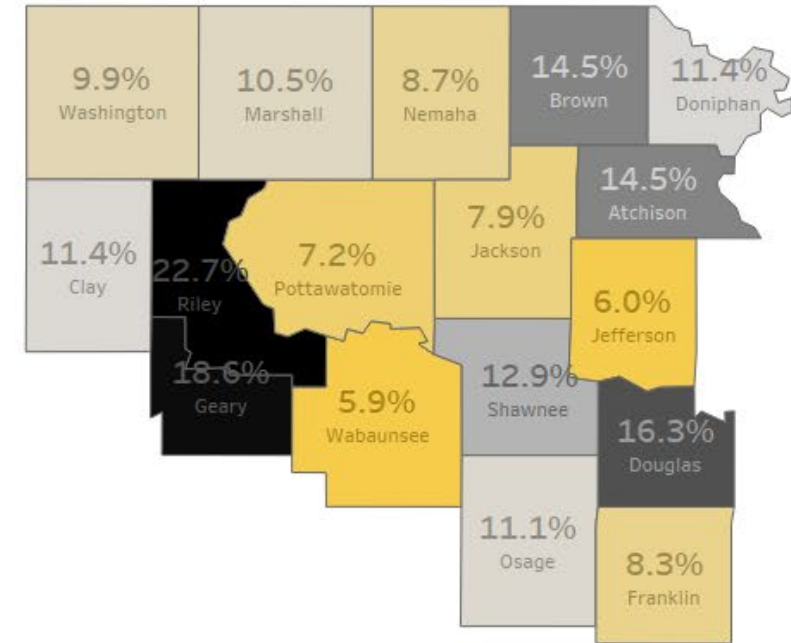
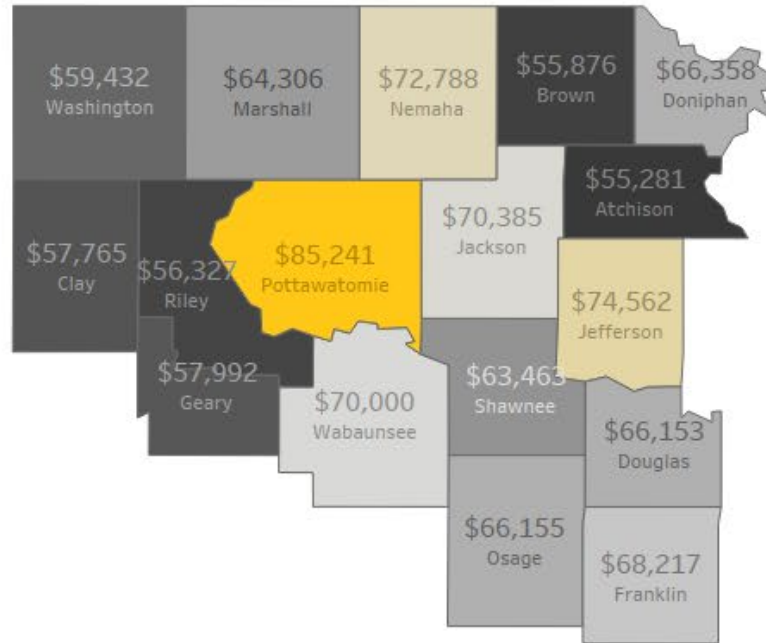
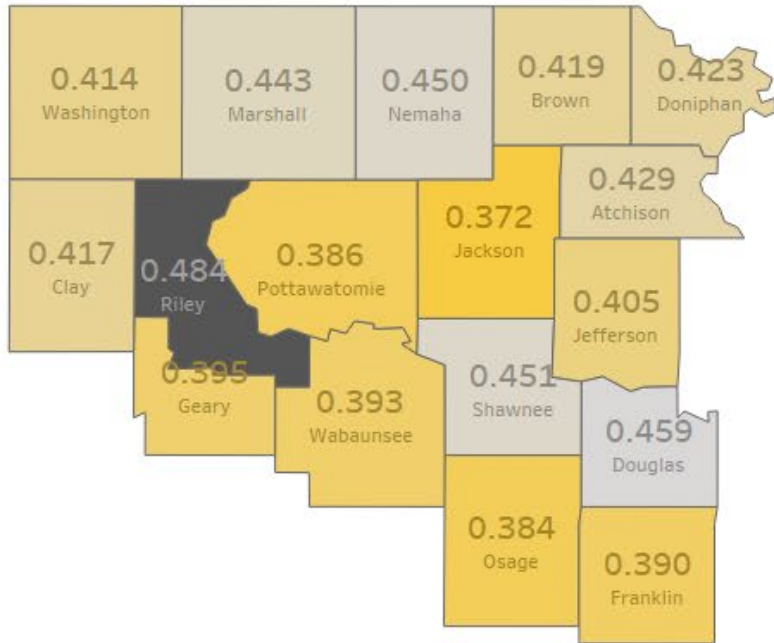
	2018	2022	Growth
Kansas	0.458	0.458	-0.1%
Franklin	0.401	0.390	-2.9%

Median Household Income

	2018	2022	Growth
Kansas	\$ 57,422	\$ 69,747	21.5%
Franklin	\$ 55,486	\$ 68,217	22.9%

Poverty Rate

	2018	2022	Growth
Kansas	12.4%	11.6%	-0.8%
Franklin	12.5%	8.3%	-4.1%



Household Index

Healthy
1/3

Low Birthweight
(1/3)

Obesity
(1/3)

Preventable
Hospitalizations
(1/3)

Wealthy
1/3

GINI Index
(1/3)

Household Income
(1/3)

Poverty
(1/3)

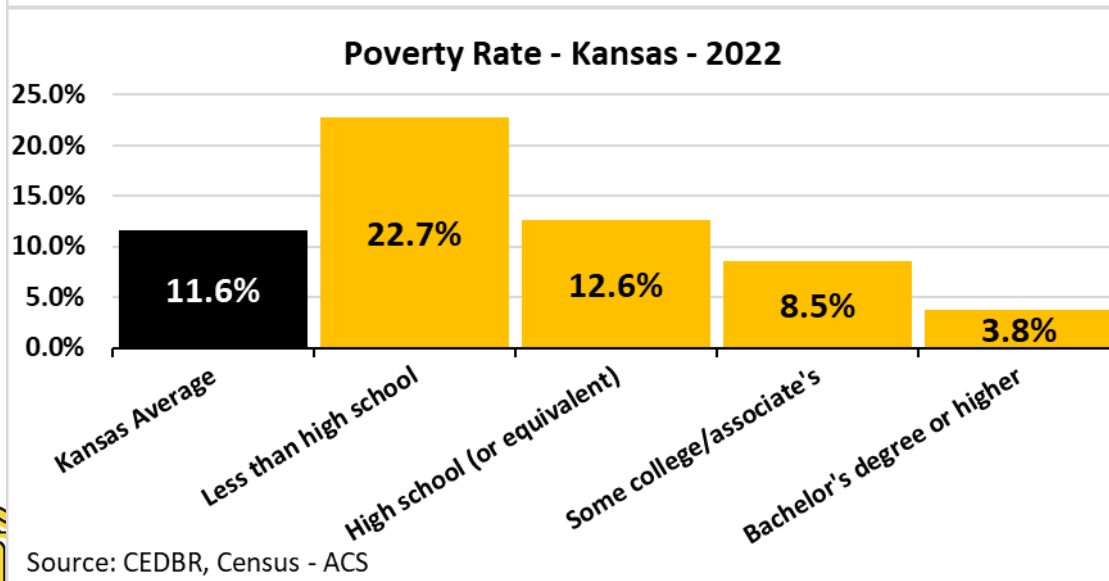
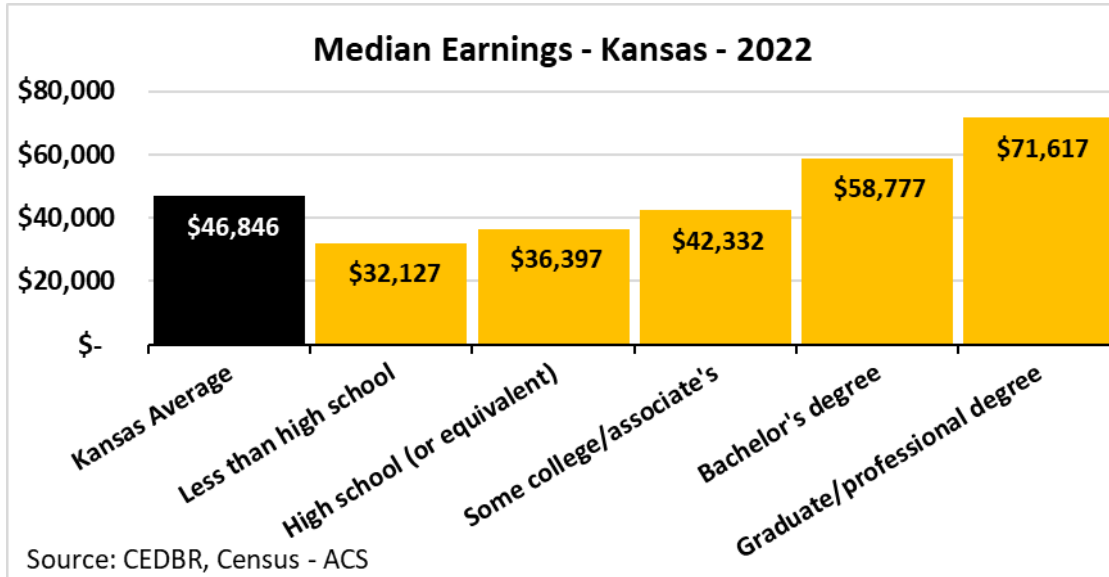
Wise
1/3

Associate's
(1/3)

Bachelor's
(1/3)

Advanced
(1/3)

Educational Attainment Drives...



Increased Productivity, Innovation, and Resilience

Attraction of Higher-Paying Jobs and Industries

Higher Incomes and Wages

Reduced Unemployment and Underemployment

Reduced Poverty and Inequality

Increased Local Spending and Economic Activity

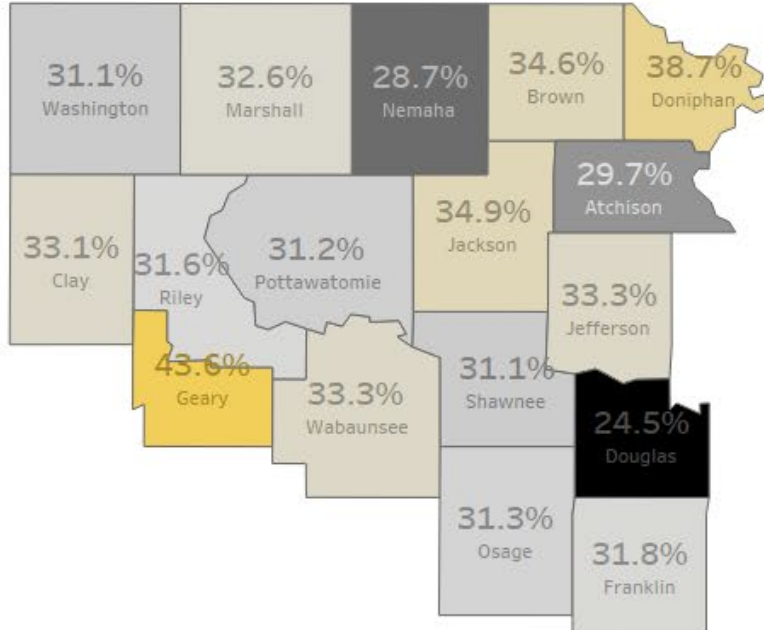


Wise – Specialized in skilled trades/associate degrees, but cultivating higher attainment

Total Education	2018	2022	Growth
Kansas	64.7%	66.1%	1.4%
Franklin	53.7%	55.8%	2.1%

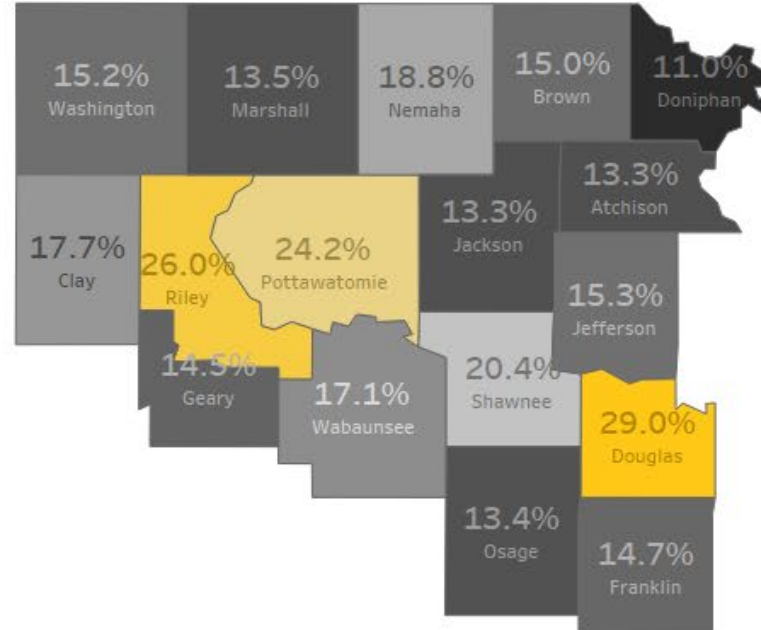
Some College and Associate Degrees

	2018	2022	Growth
Kansas	31.8%	31.4%	-0.4%
Franklin	34.2%	31.8%	-2.4%



Bachelor Degrees

	2018	2022	Growth
Kansas	20.8%	21.7%	0.9%
Franklin	13.2%	14.7%	1.5%



Advanced Degrees

	2018	2022	Growth
Kansas	12.1%	13.0%	0.9%
Franklin	6.3%	9.3%	3.0%

