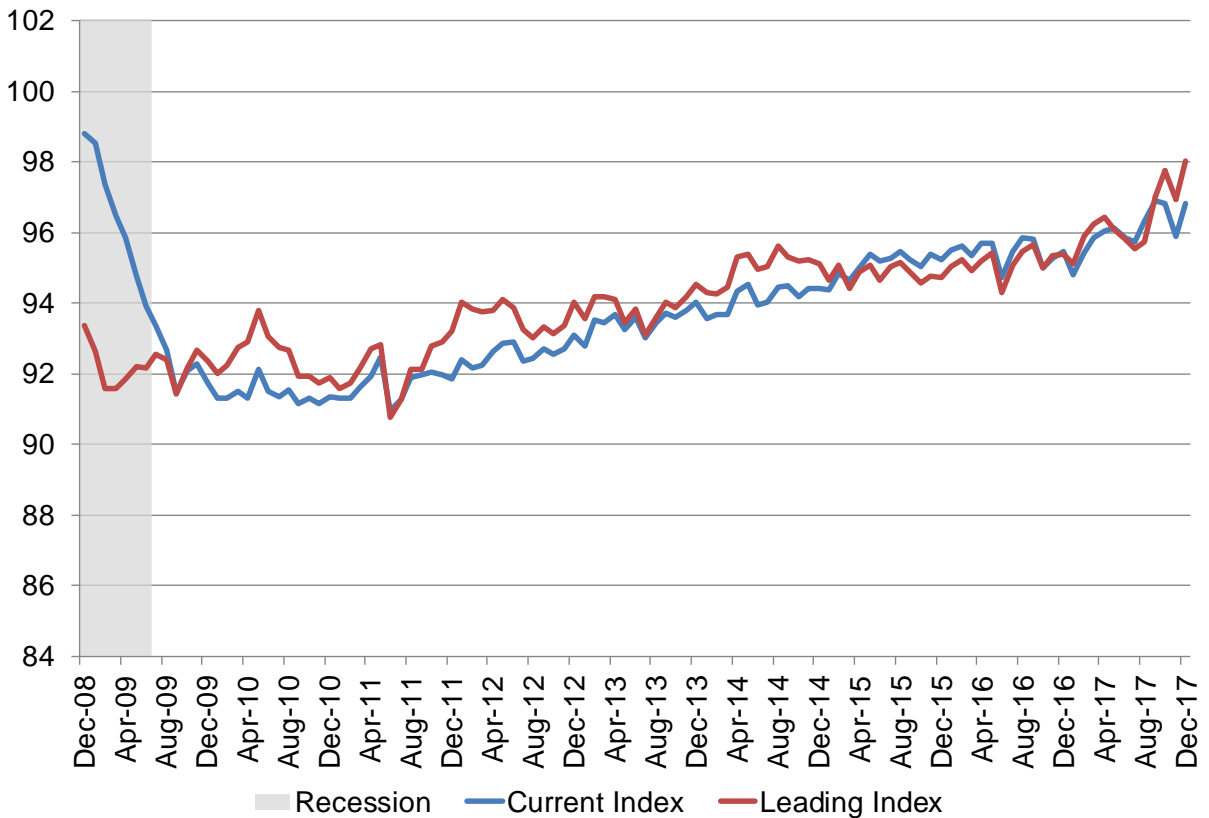


## WSU Wichita Metropolitan Area Indices

February 2018

The Center for Economic Development and Business Research has compiled the current and leading indices to provide insights into the present and future state of the Wichita economy. The WSU Current Conditions Index is designed to give an indication of the present conditions of the Wichita metropolitan area economy. The WSU Leading Economic Indicators Index is designed to give an indication of where the Wichita economy is headed over the next six months.

### WSU Indices of Economic Activity



## WSU Current Index of Economic Activity

The current index increased in December, after declining for the previous two months. The current level of economic activity is somewhat above the 2016 level. There was an increase in total employment and hours of production employees, while the unemployment rate and weekly earnings of production employees declined.

### WSU Wichita Current Conditions Index

	Dec-17	Nov-17	Monthly % Change	Annual % Change
Current Conditions Index	96.8	95.9	▲ 0.9%	▲ 1.4%
<b>Index Components - Wichita MSA</b>				
Total Non-farm Employment	301,300	298,400	▲ 1.0%	▲ 1.4%
Unemployment Rate	3.9%	4.0%	▼ -0.1%	▼ -1.0%
Hours of Production Employees*	44	43.0	▲ 2.3%	▼ -0.2%
Earnings of Production Employees*	\$739.42	\$751.94	▼ -1.7%	▼ -5.7%

Source: Bureau of Labor Statistics, data compiled by CEDBR and seasonally adjusted

\*Manufacturing Weekly Average

## WSU Leading Index of Economic Activity

The leading index continues to indicate an improvement in economic activity into the early part of the New Year, from current levels, after showing declines through the late summer. This can be attributed to improvements in the Aircraft Production Index and the National Industrial Production Index.

### WSU Wichita Leading Conditions Index

	Dec-17	Nov-17	Monthly % Change	Annual % Change
Leading Conditions Index	98.0	96.9	▲ 1.1%	▲ 2.8%
Predicted change*	▲ 1.23	▲ 1.10	-	-
<b>Index Components</b>				
Aircraft Production Index	105.2	105.1	▲ 0.1%	▼ -0.7%
Kansas Leading Index	3.7	4.1	▼ -0.4%	▲ 2.7%
National Industrial Production Index	107.5	106.5	▲ 0.9%	▲ 3.6%
International Leading Index	100.2	100.2	■ 0.0%	▲ 0.4%

Source: Board of Governors of the Federal Reserve System, Federal Reserve Bank of Philadelphia, Organization for Economic Co-Operation and Development (OECD), data compiled by CEDBR

\*Predicted change in the level of economic activity over the next six months from the current level of economic activity

Data can be accessed directly at [www.kansaseconomy.org/local-indices](http://www.kansaseconomy.org/local-indices)