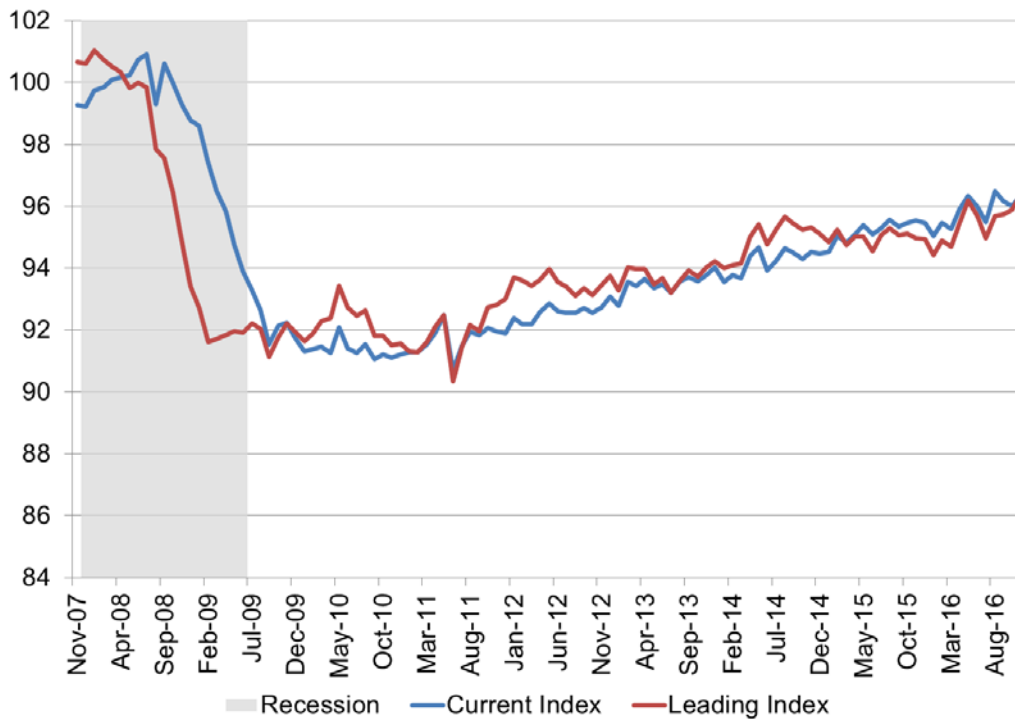


WSU Wichita Metropolitan Area Indices

January 2017

WSU Indices of Economic Activity



The Center for Economic Development and Business Research has compiled the current and leading indices to provide insights into the present and future state of the Wichita economy. The WSU Current Conditions Index is designed to give an indication of the present conditions of the Wichita metropolitan area economy. The WSU Leading Economic Indicators Index is designed to give an indication of where the Wichita economy is headed over the next six months.

WSU Current Index of Economic Activity

The current index improved slightly, after declining somewhat in the late fall. The current level of economic activity, in Wichita, remains slightly above the 2015 level. The improvement can be attributed to a decrease in the unemployment rate and small improvements in the hours and earnings of production employees.

WSU Wichita Current Conditions Index

	Nov-16	Oct-16	Monthly % Change	Annual % Change
Current Conditions Index	96.4	96.0	▲ 0.4%	▲ 0.9%
Index Components - Wichita MSA				
Total Non-farm Employment	299,400	299,600	▼ -0.1%	▲ 0.7%
Unemployment Rate	4.5%	5.1%	▼ -0.6%	▲ 0.3%
Hours of Production Employees*	43	42.2	▲ 1.9%	▼ -0.7%
Earnings of Production Employees*	\$837.00	\$800.10	▲ 4.6%	▲ 10.2%

Source: Bureau of Labor Statistics, data compiled by CEDBR and seasonally adjusted

*Manufacturing Weekly Average

WSU Leading Index of Economic Activity

The leading index is now indicating a slight increase in economic activity into the spring, from current levels, after showing decreases through the fall. This would put the level of economic activity above 2016 levels in the early part of 2017. This can mostly be attributed to improvements in the Aircraft Production Index and the Kansas Leading Index.

WSU Wichita Leading Conditions Index

	Nov-16	Oct-16	Monthly % Change	Annual % Change
Leading Conditions Index	96.4	95.9	▲ 0.6%	▲ 1.5%
Predicted change*	▲ 0.07	▼ -0.12	-	-
Index Components				
Aircraft Production Index	107.0	106.9	▲ 0.1%	▼ -1.5%
Kansas Leading Index	2.0	0.6	▲ 1.4%	▲ 2.1%
National Industrial Production Index	103.9	104.3	▼ -0.4%	▼ -0.6%
International Leading Index	99.8	99.8	■ 0.0%	■ 0.0%

Source: Board of Governors of the Federal Reserve System, Federal Reserve Bank of Philadelphia, Organization for Economic Co-Operation and Development (OECD), data compiled by CEDBR

*Predicted change in the level of economic activity over the next six months from the current level of economic activity

Data can be accessed directly at www.kansaseconomy.org/local-indices