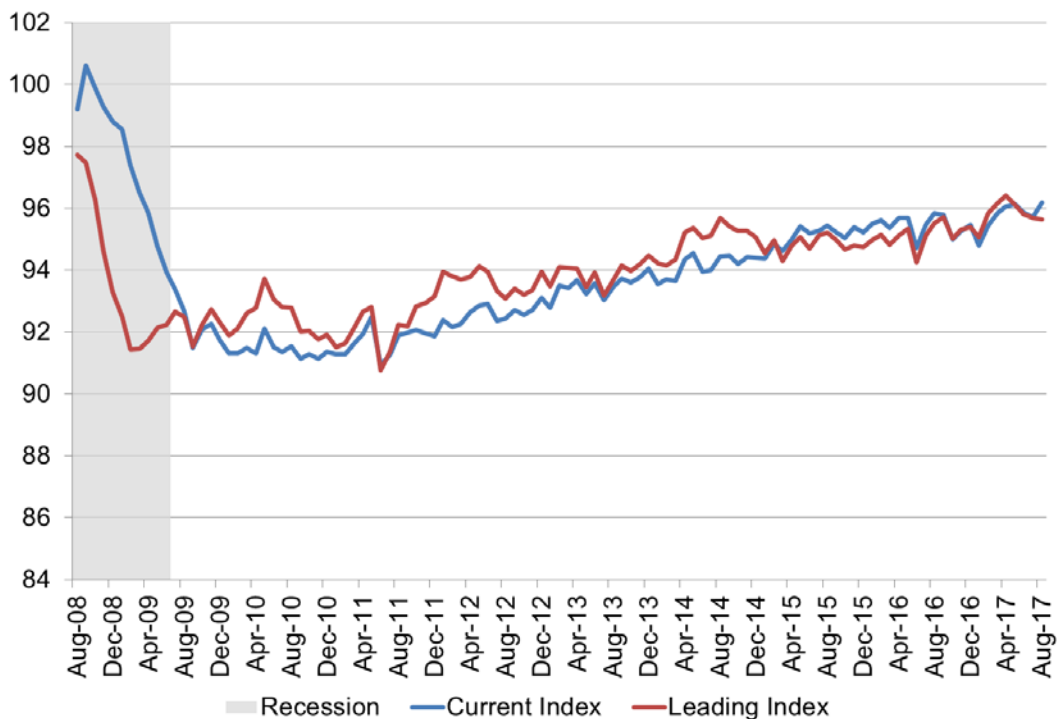


WSU Wichita Metropolitan Area Indices

October 2017

The Center for Economic Development and Business Research has compiled the current and leading indices to provide insights into the present and future state of the Wichita economy. The WSU Current Conditions Index is designed to give an indication of the present conditions of the Wichita metropolitan area economy. The WSU Leading Economic Indicators Index is designed to give an indication of where the Wichita economy is headed over the next six months.

WSU Indices of Economic Activity



WSU Current Index of Economic Activity

The current index improved slightly in August, after declining through the summer. The current level of economic activity is somewhat above the 2016 level. The improvement can be attributed to small increases in employment and the hours and earnings of production employees. The improvement was marginally offset by an increase in the unemployment rate.

WSU Wichita Current Conditions Index

	Aug-17	Jul-17	Monthly % Change	Annual % Change
Current Conditions Index	96.2	95.7	▲ 0.5%	▲ 0.4%
Index Components - Wichita MSA				
Total Non-farm Employment	299,900	298,900	▲ 0.3%	▲ 0.5%
Unemployment Rate	4.4%	4.3%	▲ 0.1%	▼ -0.4%
Hours of Production Employees*	43.2	41.6	▲ 3.8%	▲ 0.2%
Earnings of Production Employees*	\$746.19	\$742.85	▲ 0.4%	▼ -7.6%

Source: Bureau of Labor Statistics, data compiled by CEDBR and seasonally adjusted

*Manufacturing Weekly Average

WSU Leading Index of Economic Activity

The leading index continues to indicate a decrease in economic activity into the fall, from current levels, after showing improvement through the spring and summer. However, the August index indicates a larger decrease than July. This can be attributed to decreases in the National Industrial Production Index and the Kansas Leading Index. This would put the level of economic activity slightly above 2016 levels through the end of 2017.

WSU Wichita Leading Conditions Index

	Aug-17	Jul-17	Monthly % Change	Annual % Change
Leading Conditions Index	95.6	95.7	▼ -0.1%	▲ 0.1%
Predicted change*	▼ -0.57	▼ -0.03	-	-
Index Components				
Aircraft Production Index	104.1	102.5	▲ 1.6%	▼ -2.5%
Kansas Leading Index	-1.1	0.5	▼ -1.6%	▼ -1.3%
National Industrial Production Index	104.7	105.7	▼ -0.9%	▲ 1.6%
International Leading Index	100.1	100.1	▬ 0.0%	▲ 0.5%

Source: Board of Governors of the Federal Reserve System, Federal Reserve Bank of Philadelphia, Organization for Economic Co-Operation and Development (OECD), data compiled by CEDBR

*Predicted change in the level of economic activity over the next six months from the current level of economic activity

Data can be accessed directly at www.kansaseconomy.org/local-indices