



WICHITA STATE
UNIVERSITY

W. FRANK BARTON
SCHOOL OF BUSINESS

Center for Economic Development
and Business Research

Wichita Metro Area Current Conditions Index Results for Fourth Quarter 2011

Introduction

The WSU Current Conditions Index is designed to give an indication of the present condition of the Wichita metropolitan area economy. The WSU Current Conditions Index is composed of six monthly indicators including:

- Number of monthly home sales
- Hotel occupancy rate
- Number of outbound airline passengers
- Volume of outbound airfreight
- Number of wage and salary employed
- Civilian unemployment rate

The WSU Current Conditions Index is designed to reflect the present state of the economy. The WSU Leading Economic Indicators Index, on the other hand, is designed to forecast future movements in the economy. On the national level, The Conference Board releases the most widely followed indicators. The WSU Current Conditions Index is similar to what The Conference Board refers to as their “coincident” indicators index.

Summary of Results¹

Quarter-to-Quarter Comparison: Third Quarter 2011 to Fourth Quarter 2011

- WSU Current Conditions Index decreased 1 percent
- Homes sales decreased 7 percent
- Hotel occupancy rate decreased 1.2 percentage points
- Number of outbound airline passengers decreased 6.9 percent
- Outbound airfreight shipments at the airport decreased 3.8 percent
- Wage and salary employment decreased 0.1 percent
- Unemployment rate decreased 0.8 percentage points

Year-Over-Year Quarterly Comparison: Fourth Quarter 2010 to Fourth Quarter 2011

- WSU Current Conditions Index increased 1.1 percent
- Home sales increased 1.4 percent
- Hotel occupancy rate decreased 3 percentage points
- Number of outbound airline passengers decreased 5.1 percent
- Outbound airfreight shipments at the airport decreased 2.5 percent
- Wage and salary employment increased 1 percent
- Unemployment rate decreased 1 percentage point

Year-to-Year Comparison: December 2010 to December 2011

(12 months ending December 2010 compared to the 12 months ending December 2011)

- WSU Current Conditions Index increased 0.2 percent
- Home sales decreased 4.4 percent
- Hotel occupancy rates increased 0.7 percentage points
- Number of outbound airline passengers decreased 1.3 percent
- Outbound airfreight shipments decreased 4.3 percent
- Wage and salary employment increased 0.5 percent
- Unemployment rate decreased 0.8 percentage points

¹ Unless noted otherwise, all data discussed in the summary of results are seasonally adjusted.

Table 1. Current Conditions Index for the 13 Months Ending December 2011

Month	Year	Index	Percentage Change
December	2010	85.44	-0.7%
January	2011	86.11	0.8%
February	2011	86.71	0.7%
March	2011	86.73	0.0%
April	2011	87.28	0.6%
May	2011	87.83	0.6%
June	2011	88.04	0.2%
July	2011	88.10	0.1%
August	2011	87.86	-0.3%
September	2011	87.96	0.1%
October	2011	87.38	-0.7%
November	2011	87.02	-0.4%
December	2011	86.88	-0.2%
Fourth Quarter	2010	86.16	
Fourth Quarter	2011	87.09	1.1%

Table 2. Current Indicators (seasonally adjusted)*

Month	Year	Number of Home Sales	Hotel Occupancy Rate (%)	Number of Outbound Airline Passengers	Outbound Airfreight Shipments in Pounds	Number of Wage & Salary Employed	Unemployment Rate (%)
December	2010	630	59.1	64,371	1,746,076	279,942	8.2
January	2011	574	57.1	62,930	2,111,908	285,875	8.3
February	2011	606	63.1	58,763	1,891,831	284,608	8.2
March	2011	645	62.1	61,079	1,966,002	285,913	8.3
April	2011	699	60.9	60,939	1,986,145	285,689	7.6
May	2011	598	60.7	65,192	1,723,540	285,066	7.7
June	2011	608	62.9	67,616	1,581,430	284,422	7.7
July	2011	618	60.9	68,839	1,679,484	284,986	8.0
August	2011	627	54.4	62,047	1,734,835	286,442	8.2
September	2011	699	57.2	69,113	1,735,084	283,903	8.0
October	2011	553	58.9	63,506	1,680,062	285,874	7.2
November	2011	598	54.3	62,458	1,529,601	284,779	7.1
December	2011	656	55.8	60,224	1,744,076	283,542	7.4

*Figures in this table are seasonally adjusted for the Current Conditions Index and differ from those of other published reports, which may not be seasonally adjusted. Many of the figures published for the Wichita economy in the Kansas Economic Indicators are not seasonally adjusted.

Table 3. Current Indicators (not seasonally adjusted)

Month	Year	Number of Home Sales	Hotel Occupancy Rate (%)	Number of Outbound Airline Passengers	Outbound Airfreight Shipments in Pounds	Number of Employed	Unemployment Rate (%)
December	2010	595	47.6	65,704	1,716,000	284,800	7.7
January	2011	357	47.9	54,826	2,042,000	279,900	8.7
February	2011	416	56.8	47,929	1,538,000	280,200	8.4
March	2011	605	64.0	63,256	1,618,000	283,800	8.3
April	2011	697	60.8	57,615	1,984,000	286,600	7.5
May	2011	698	64.5	71,312	1,786,000	286,900	7.6
June	2011	752	67.2	74,062	1,768,000	287,300	7.9
July	2011	749	65.4	75,306	1,902,000	282,800	7.9
August	2011	760	61.0	65,527	1,688,000	283,600	8.2
September	2011	703	61.1	65,233	1,782,000	285,300	7.9
October	2011	566	60.7	65,034	1,820,000	288,400	7.2
November	2011	555	54.4	61,050	1,722,000	287,900	7.1
December	2011	621	44.3	61,557	1,714,000	288,400	6.9

Figure 1. Percentage Change in Current Conditions Index

For the 13 Months Ending December 2011

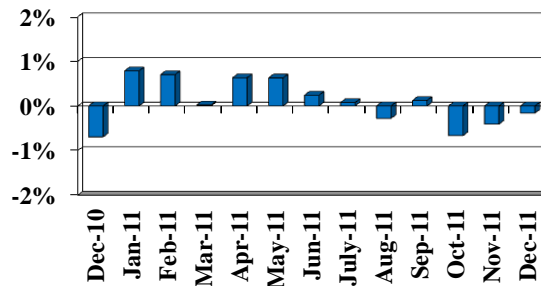


Figure 2. Number of New and Existing Home Sales

**For the 13 Months Ending December 2011
(seasonally adjusted)**

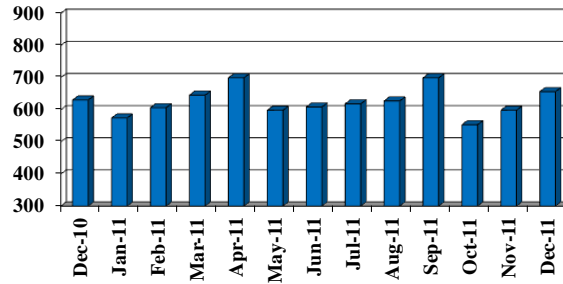


Figure 3. Hotel Occupancy Rate in Percent

**For the 13 Months Ending December 2011
(seasonally adjusted)**

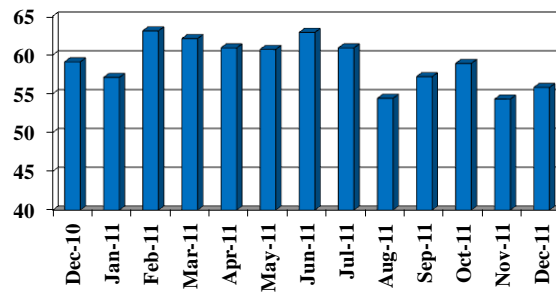


Figure 4. Number of Outbound Airline Passengers

For the 13 Months Ending December 2011
(seasonally adjusted)

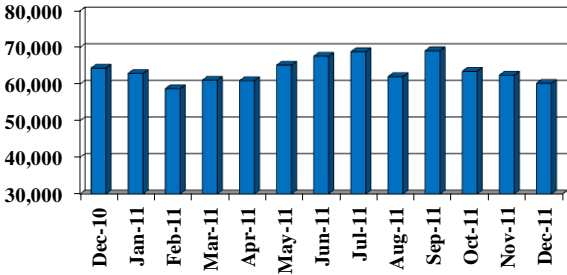


Figure 5. Outbound Airfreight Shipments in Pounds

For the 13 Months Ending December 2011
(seasonally adjusted)

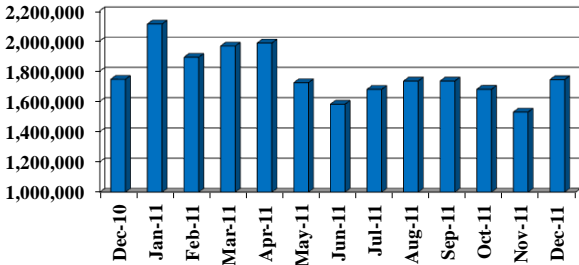


Figure 6. Number of Non-Farm
Wage & Salary Employed

For the 13 Months Ending December 2011
(seasonally adjusted)

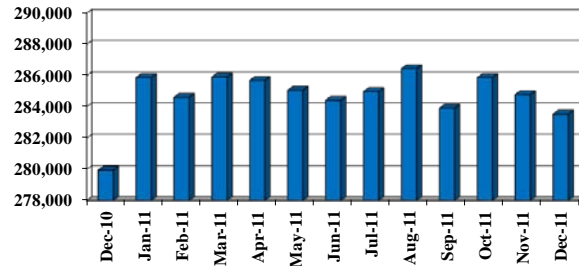
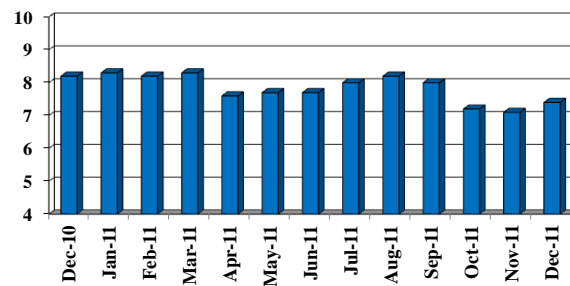


Figure 7. Unemployment Rate in Percent

For the 13 Months Ending December 2011
(seasonally adjusted)



Acknowledgments

The Center for Economic Development and Business Research wishes to thank Dr. Terence Decker for his invaluable assistance in developing the methodology for the WSU Current Conditions Index. Dr. Decker teaches Economics in the Barton School of Business at Wichita State University.