

# Employment and Unemployment

State of Kansas and Metropolitan Areas

February, 2018



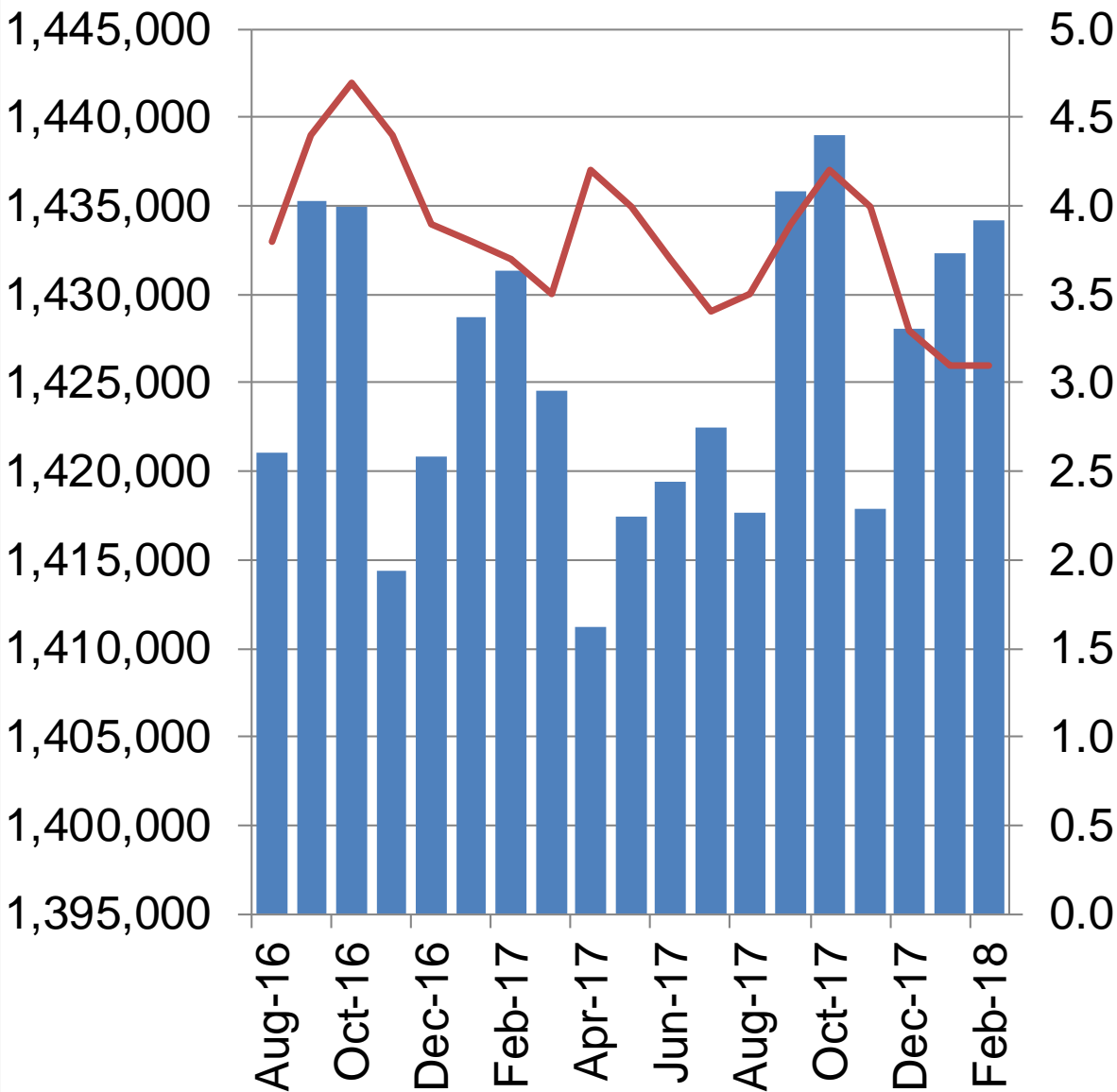
# State of Kansas

Kansas  
February, 2018

Employed ↑ 6,111  
 Unemployed ↑ 2,452  
 Labor Force ↑ 8,563

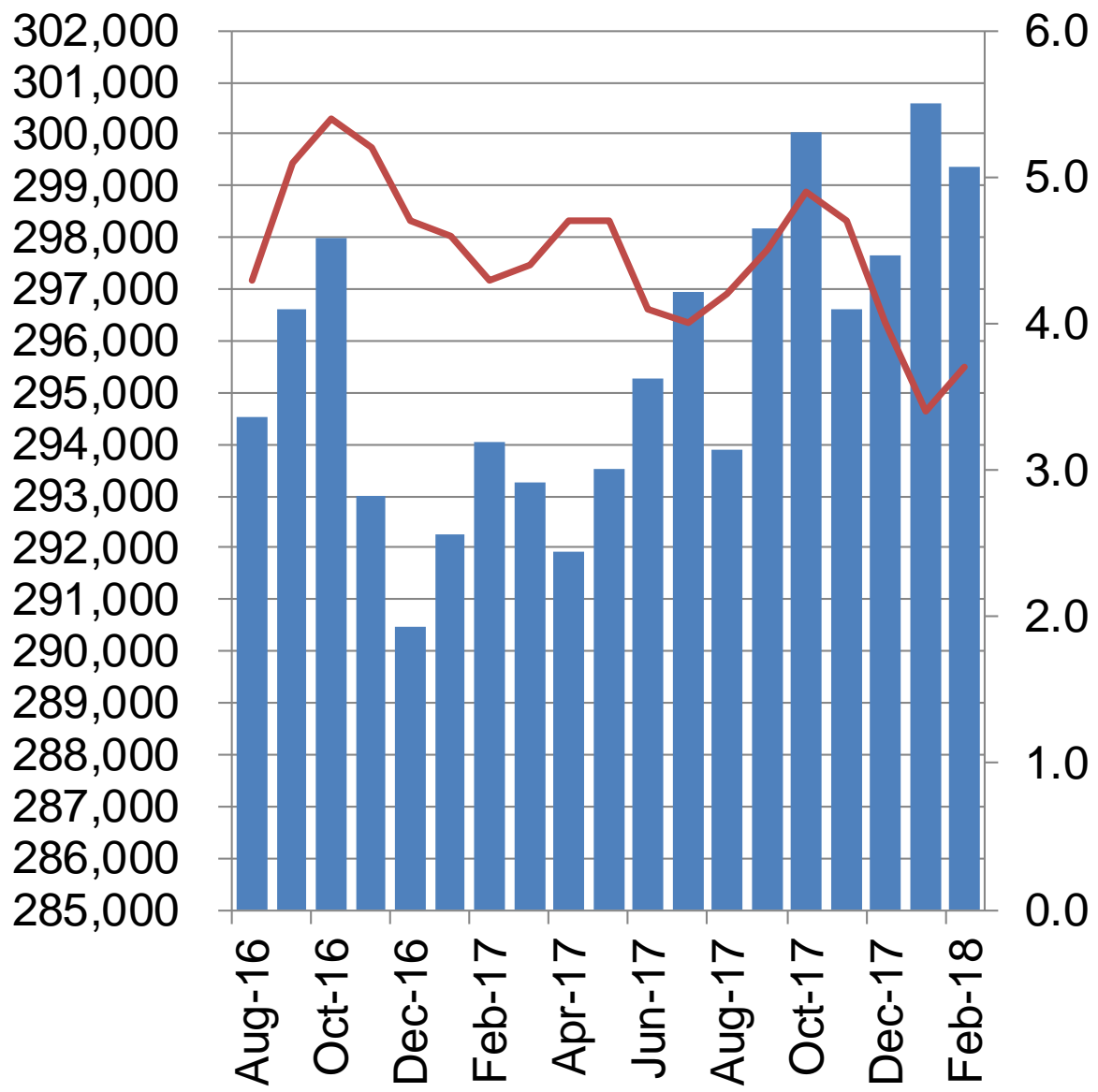
Unemployment Rate  
 Jan-18 3.5  
 Feb-18 3.6  
 UR Change ↑ 0.1

■ employment  
— Unemployment rate



Source: Bureau of Labor Statistics, Not Seasonally Adjusted

# Wichita Metropolitan Area



Wichita  
February, 2018

Employed	↓	-927
Unemployed	↑	866
Labor Force	↓	-61

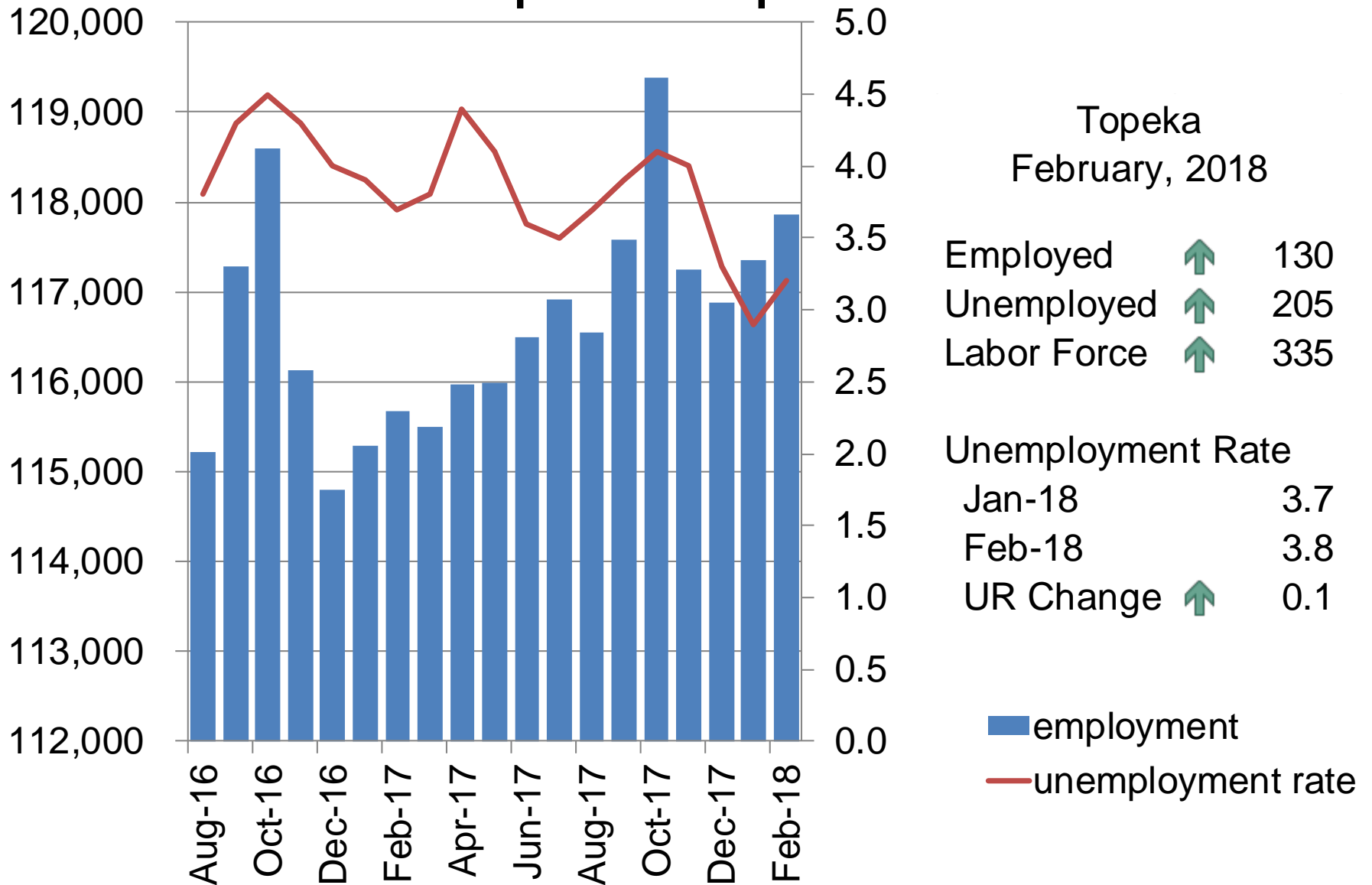
Unemployment Rate

Jan-18	3.8
Feb-18	4.1
UR Change	↑ 0.3

■ employment  
— Unemployment rate

Source: Bureau of Labor Statistics, Not Seasonally Adjusted

# Topeka Metropolitan Area



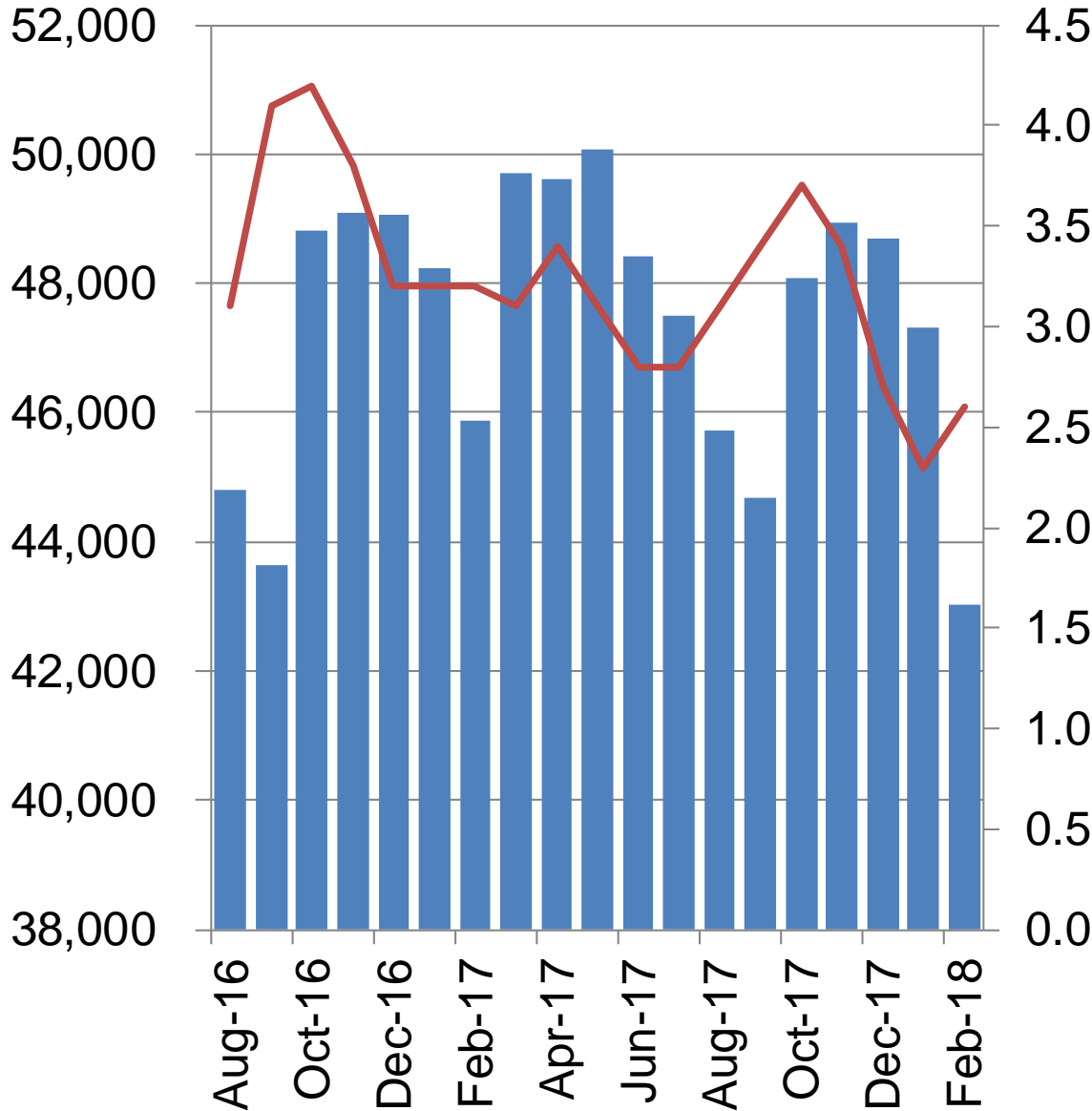
Topeka  
February, 2018

Employed ↑ 130  
 Unemployed ↑ 205  
 Labor Force ↑ 335

Unemployment Rate  
 Jan-18 3.7  
 Feb-18 3.8  
 UR Change ↑ 0.1


Source: Bureau of Labor Statistics, Not Seasonally Adjusted



# Manhattan Metropolitan Area



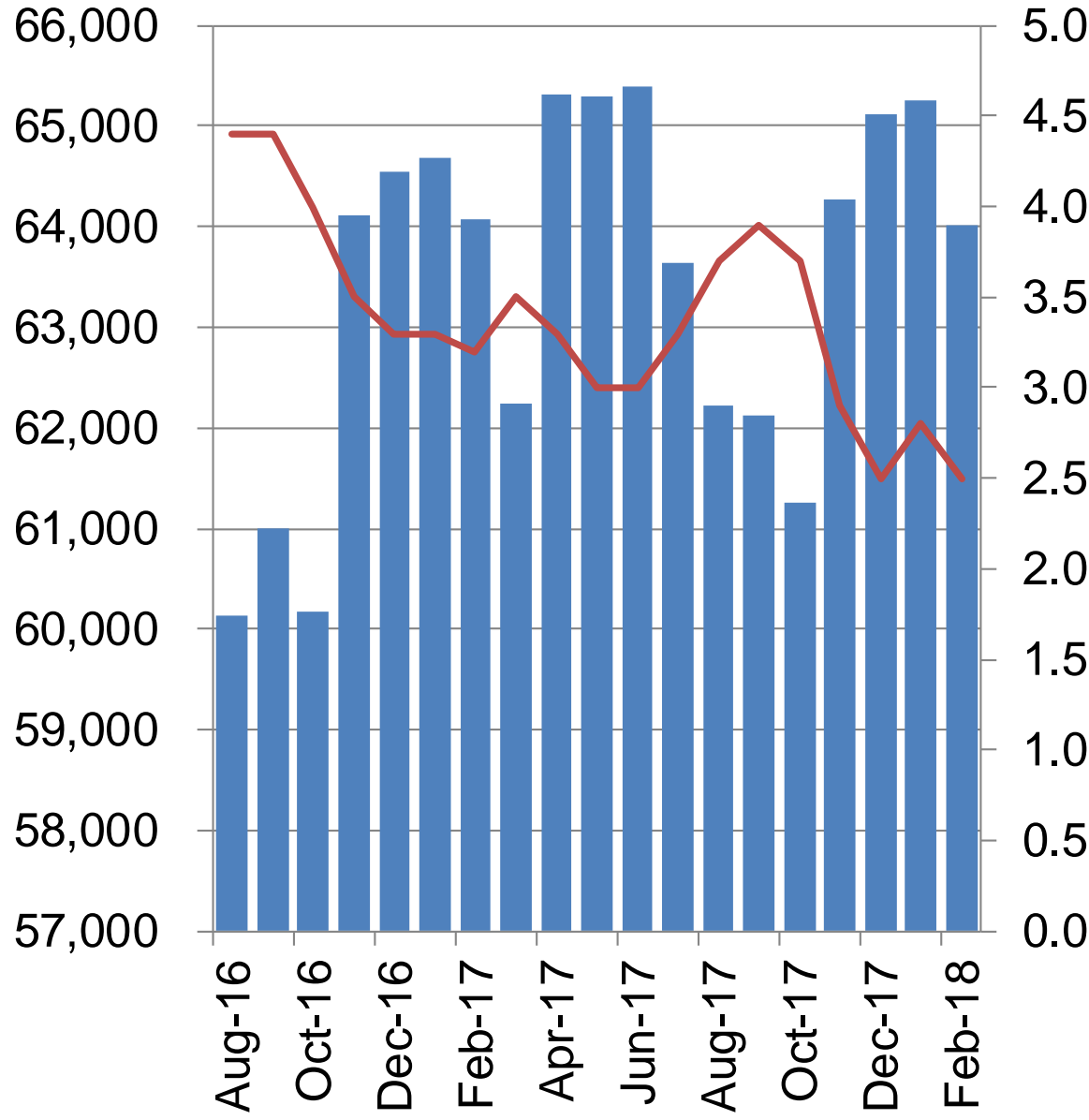
Manhattan  
February, 2018

Employed  3,955  
 Unemployed  116  
 Labor Force  4,071

Unemployment Rate  
 Jan-18 2.9  
 Feb-18 2.9  
 UR Change  0.0

 employment  
 unemployment rate

# Lawrence Metropolitan Area



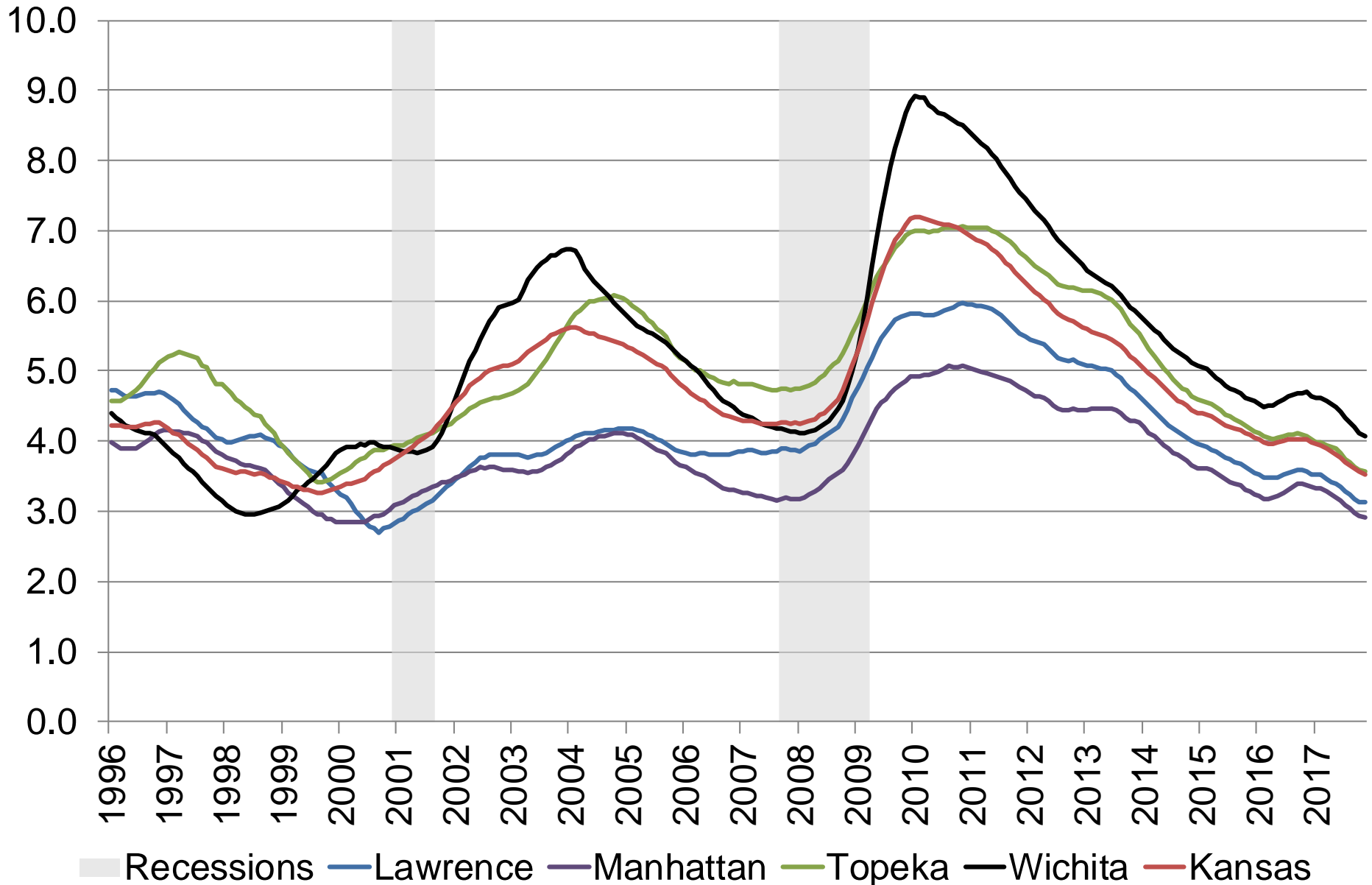
Lawrence  
February, 2018

Employed  2,187  
 Unemployed  245  
 Labor Force  2,432

Unemployment Rate  
 Jan-18 3.0  
 Feb-18 3.3  
 UR Change  0.3

 employment  
 unemployment rate

# Annual Average Unemployment Rate



Source: Bureau of Labor Statistics, Not Seasonally Adjusted, 12-month moving average

# Data Definitions

- **Civilian noninstitutional population:** Persons 16 years of age and older residing in the 50 states and the District of Columbia, who are not inmates of institutions (e.g., penal and mental facilities, homes for the aged), and who are not on active duty in the Armed Forces.
- **Civilian labor force:** All persons in the civilian noninstitutional population classified as either employed or unemployed.
- **Employed persons:** All persons who, during the reference week (week including the twelfth day of the month), (a) did any work as paid employees, worked in their own business or profession or on their own farm, or worked 15 hours or more as unpaid workers in an enterprise operated by a member of their family, or (b) were not working but who had jobs from which they were temporarily absent. Each employed person is counted only once, even if he or she holds more than one job.
- **Unemployed persons:** All persons who had no employment during the reference week, were available for work, except for temporary illness, and had made specific efforts to find employment some time during the 4-week period ending with the reference week. Persons who were waiting to be recalled to a job from which they had been laid off need not have been looking for work to be classified as unemployed.
- **Unemployment rate:** The ratio of unemployed to the civilian labor force expressed as a percent [i.e., 100 times (unemployed/labor force)].



# Thank You

For additional information you may contact us

at: (316) 978-3225

or

[cedbr@wichita.edu](mailto:cedbr@wichita.edu)



**CEDBR**

Center for Economic Development  
and Business Research