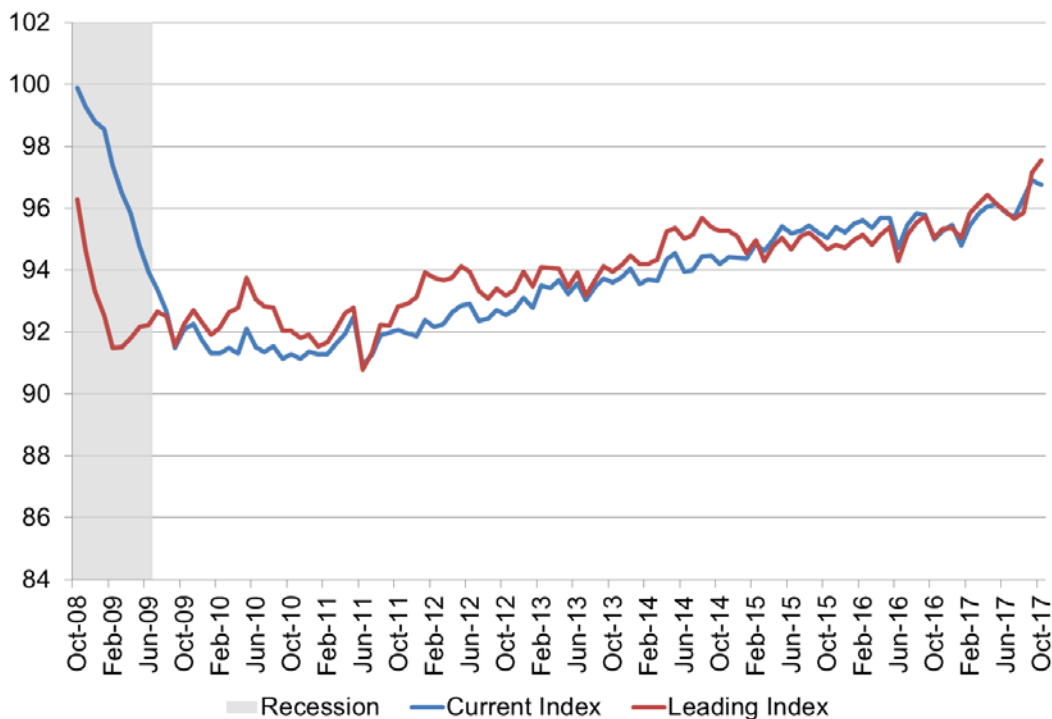


WSU Wichita Metropolitan Area Indices

December 2017

The Center for Economic Development and Business Research has compiled the current and leading indices to provide insights into the present and future state of the Wichita economy. The WSU Current Conditions Index is designed to give an indication of the present conditions of the Wichita metropolitan area economy. The WSU Leading Economic Indicators Index is designed to give an indication of where the Wichita economy is headed over the next six months.

WSU Indices of Economic Activity



WSU Current Index of Economic Activity

The current index declined slightly in October, after improving through the end of the summer. The current level of economic activity is well above the 2016 level. The improvement can be attributed to strong increases in the hours and earnings of production employees.

WSU Wichita Current Conditions Index

	Oct-17	Sep-17	Monthly % Change	Annual % Change
Current Conditions Index	96.8	96.9	▼ -0.1%	▲ 1.9%
Index Components - Wichita MSA				
Total Non-farm Employment	300,600	301,500	▼ -0.3%	▲ 1.4%
Unemployment Rate	4.0%	4.0%	▬ 0.0%	▼ -1.2%
Hours of Production Employees*	43.7	43.1	▲ 1.4%	▲ 4.0%
Earnings of Production Employees*	\$788.01	\$779.69	▲ 1.1%	▼ -0.4%

Source: Bureau of Labor Statistics, data compiled by CEDBR and seasonally adjusted

*Manufacturing Weekly Average

WSU Leading Index of Economic Activity

The leading index continues to indicate an improvement in economic activity into the New Year, from current levels, after showing declines through the late summer. This can be attributed to a significant improvement in the Kansas Leading Index. There were also improvements in the Aircraft Production Index and the National Industrial Production Index. This would put the level of economic activity slightly above 2017 levels through the beginning of 2018.

WSU Wichita Leading Conditions Index

	Oct-17	Sep-17	Monthly % Change	Annual % Change
Leading Conditions Index	97.6	97.2	▲ 0.4%	▲ 2.6%
Predicted change*	▲ 0.82	▲ 0.25	-	-
Index Components				
Aircraft Production Index	104.0	103.7	▲ 0.3%	▼ -1.0%
Kansas Leading Index	3.8	1.6	▲ 2.2%	▲ 2.3%
National Industrial Production Index	106.1	105.2	▲ 0.9%	▲ 2.8%
International Leading Index	100.1	100.1	▬ 0.0%	▲ 0.4%

Source: Board of Governors of the Federal Reserve System, Federal Reserve Bank of Philadelphia, Organization for Economic Co-Operation and Development (OECD), data compiled by CEDBR

*Predicted change in the level of economic activity over the next six months from the current level of economic activity

Data can be accessed directly at www.kansaseconomy.org/local-indices