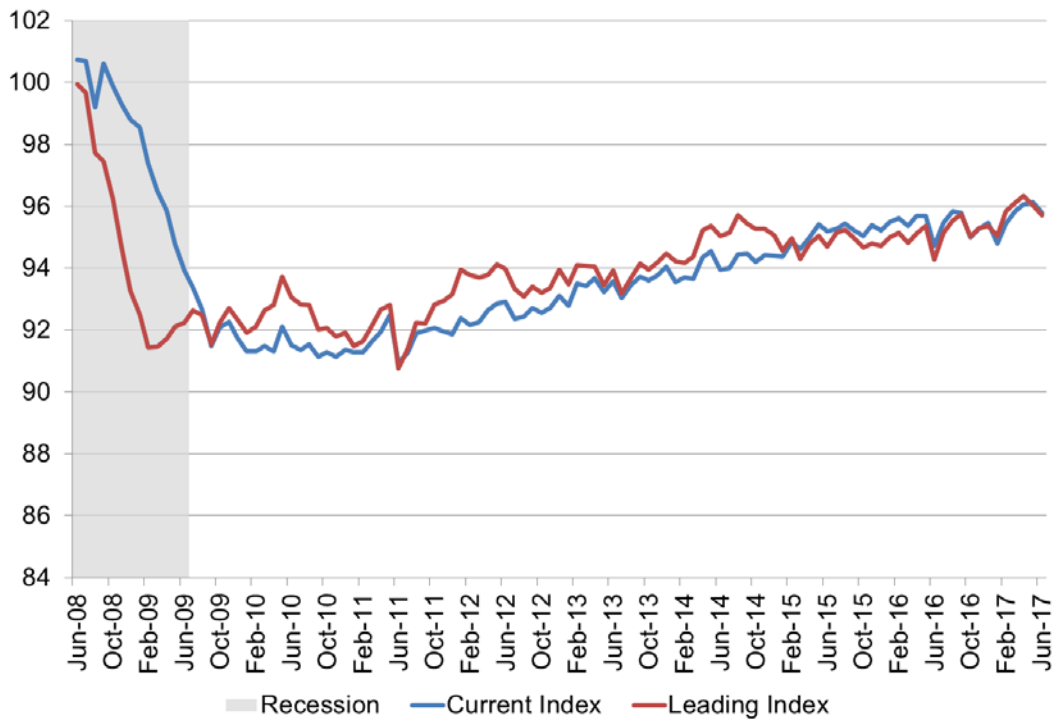


## WSU Wichita Metropolitan Area Indices

August 2017

The Center for Economic Development and Business Research has compiled the current and leading indices to provide insights into the present and future state of the Wichita economy. The WSU Current Conditions Index is designed to give an indication of the present conditions of the Wichita metropolitan area economy. The WSU Leading Economic Indicators Index is designed to give an indication of where the Wichita economy is headed over the next six months.

**WSU Indices of Economic Activity**



## WSU Current Index of Economic Activity

The current index declined somewhat after improvements through the spring. The current level of economic activity, in Wichita, remains somewhat above the 2016 level. The deterioration can be attributed to an increase in the unemployment rate and decreases in the hours and earnings of production workers.

### WSU Wichita Current Conditions Index

	Jun-17	May-17	Monthly % Change	Annual % Change
Current Conditions Index	95.8	96.1	▼ -0.3%	▲ 1.2%
<b>Index Components - Wichita MSA</b>				
Total Non-farm Employment	298,800	298,400	▲ 0.1%	▲ 1.0%
Unemployment Rate	4.3%	4.1%	▲ 0.2%	▼ -0.5%
Hours of Production Employees*	42.4	44.7	▼ -5.1%	▲ 2.4%
Earnings of Production Employees*	\$744.81	\$772.77	▼ -3.6%	▼ -2.7%

Source: Bureau of Labor Statistics, data compiled by CEDBR and seasonally adjusted

\*Manufacturing Weekly Average

## WSU Leading Index of Economic Activity

The leading index continues to indicate a small decrease in economic activity into the fall, from current levels, after showing improvement through the spring. However, the June index indicates a smaller decrease than May. This would put the level of economic activity slightly above 2016 levels through the end of 2017.

### WSU Wichita Leading Conditions Index

	Jun-17	May-17	Monthly % Change	Annual % Change
Leading Conditions Index	95.7	96.0	▼ -0.3%	▲ 1.5%
Predicted change*	▼ -0.09	▼ -0.10	-	-
<b>Index Components</b>				
Aircraft Production Index	102.6	102.4	▲ 0.2%	▼ -4.6%
Kansas Leading Index	1.0	0.7	▲ 0.3%	▲ 1.4%
National Industrial Production Index	105.2	104.8	▲ 0.4%	▲ 2.0%
International Leading Index	100.0	100.0	▬ 0.0%	▲ 0.4%

Source: Board of Governors of the Federal Reserve System, Federal Reserve Bank of Philadelphia, Organization for Economic Co-Operation and Development (OECD), data compiled by CEDBR

\*Predicted change in the level of economic activity over the next six months from the current level of economic activity

Data can be accessed directly at [www.kansaseconomy.org/local-indices](http://www.kansaseconomy.org/local-indices)