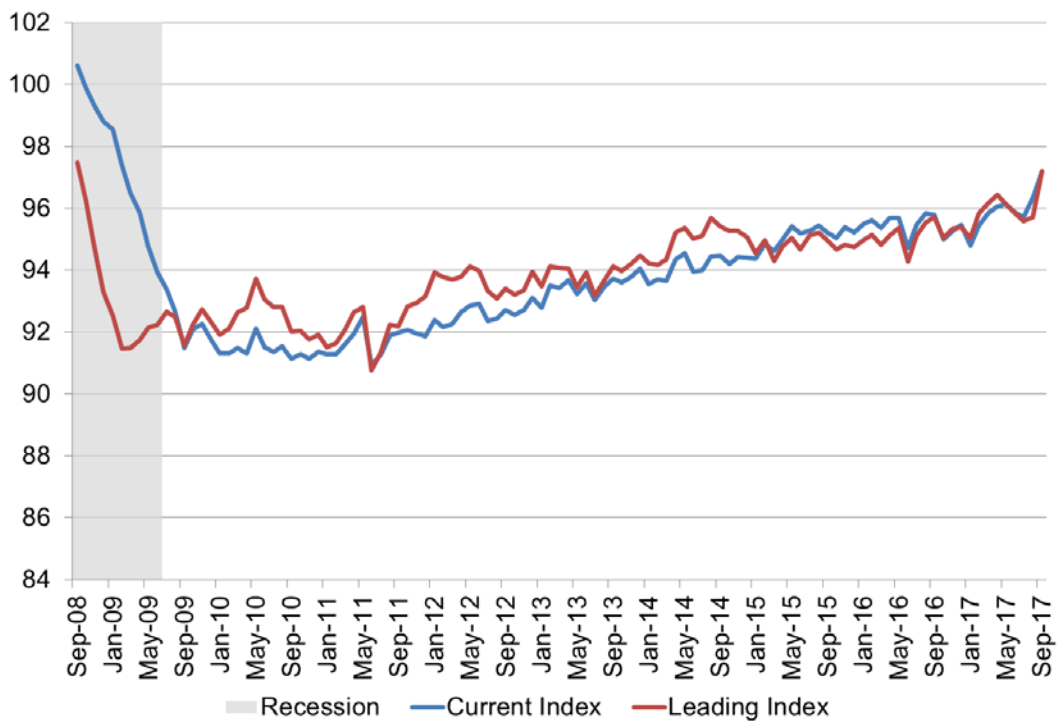


WSU Wichita Metropolitan Area Indices

November 2017

The Center for Economic Development and Business Research has compiled the current and leading indices to provide insights into the present and future state of the Wichita economy. The WSU Current Conditions Index is designed to give an indication of the present conditions of the Wichita metropolitan area economy. The WSU Leading Economic Indicators Index is designed to give an indication of where the Wichita economy is headed over the next six months.

WSU Indices of Economic Activity



WSU Current Index of Economic Activity

The current index improved again in September, after declining through the summer. The current level of economic activity is well above the 2016 level. The improvement can be attributed to strong improvements in total non-farm employment and the unemployment rate. The earnings of production employees also notably improved.

WSU Wichita Current Conditions Index

	Sep-17	Aug-17	Monthly % Change	Annual % Change
Current Conditions Index	97.2	96.3	▲ 0.9%	▲ 1.5%
Index Components - Wichita MSA				
Total Non-farm Employment	302,700	300,200	▲ 0.8%	▲ 1.3%
Unemployment Rate	4.0%	4.3%	▼ -0.3%	▼ -0.7%
Hours of Production Employees*	42.7	43.1	▼ -0.9%	▲ 2.4%
Earnings of Production Employees*	\$774.28	\$754.39	▲ 2.6%	▼ -2.5%

Source: Bureau of Labor Statistics, data compiled by CEDBR and seasonally adjusted

*Manufacturing Weekly Average

WSU Leading Index of Economic Activity

The leading index now indicates a small improvement in economic activity into the new year, from current levels, after showing declines through the late summer. This can be attributed to improvements in the National Industrial Production Index, Kansas Leading Index, and the International Leading Index. This would put the level of economic activity slightly above 2017 levels through the beginning of 2018.

WSU Wichita Leading Conditions Index

	Sep-17	Aug-17	Monthly % Change	Annual % Change
Leading Conditions Index	97.2	95.7	▲ 1.5%	▲ 1.5%
Predicted change*	▲ 0.02	▼ -0.62	-	-
Index Components				
Aircraft Production Index	102.3	102.8	▼ -0.5%	▼ -2.7%
Kansas Leading Index	1.5	-0.9	▲ 2.4%	▲ 0.6%
National Industrial Production Index	104.6	104.3	▲ 0.3%	▲ 1.6%
International Leading Index	100.2	100.1	▲ 0.1%	▲ 0.6%

Source: Board of Governors of the Federal Reserve System, Federal Reserve Bank of Philadelphia, Organization for Economic Co-Operation and Development (OECD), data compiled by CEDBR

*Predicted change in the level of economic activity over the next six months from the current level of economic activity

Data can be accessed directly at www.kansaseconomy.org/local-indices