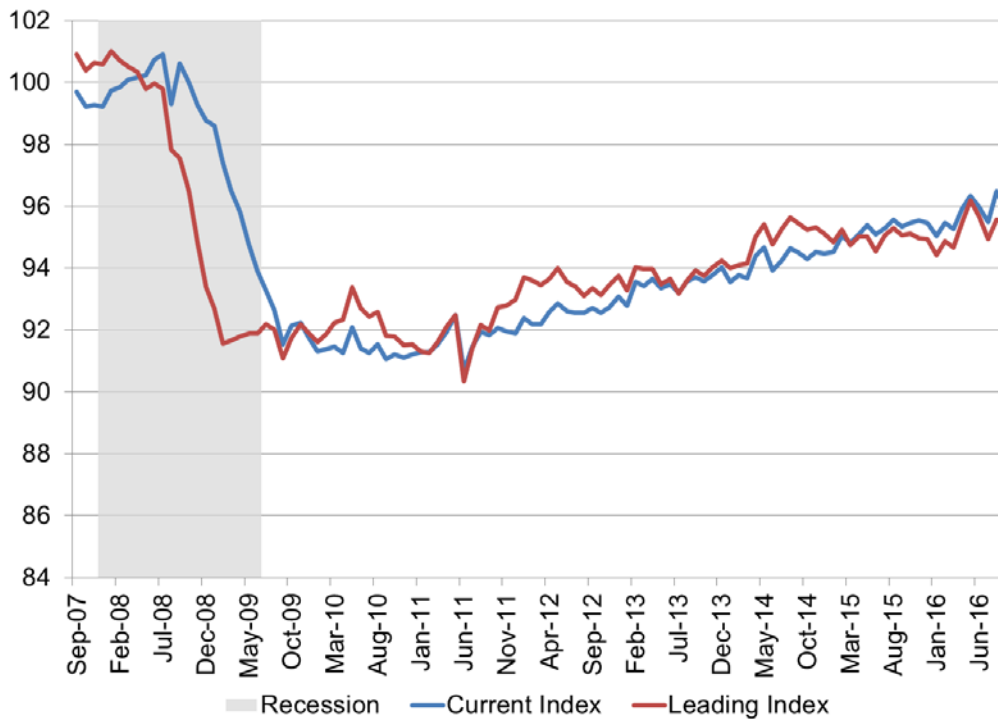


WSU Wichita Metropolitan Area Indices

November 2016

WSU Indices of Economic Activity



The Center for Economic Development and Business Research has compiled the current and leading indices to provide insights into the present and future state of the Wichita economy. The WSU Current Conditions Index is designed to give an indication of the present conditions of the Wichita metropolitan area economy. The WSU Leading Economic Indicators Index is designed to give an indication of where the Wichita economy is headed over the next six months.

WSU Current Index of Economic Activity

The current index declined somewhat between August and September, after improving in mid-summer. The current level of economic activity, in Wichita, remains only slightly above 2015 level. Three of the index components deteriorated between August and September. Only the unemployment rate showed a slight improvement.

WSU Wichita Current Conditions Index

	Sep-16	Aug-16	Monthly % Change	Annual % Change
Current Conditions Index	96.0	96.5	▼ -0.5%	▲ 0.6%
Index Components - Wichita MSA				
Total Non-farm Employment	299,400	300,500	▼ -0.4%	▲ 1.0%
Unemployment Rate	4.6%	4.8%	▼ -0.2%	▲ 0.2%
Hours of Production Employees*	41.7	43.1	▼ -3.2%	▼ -5.7%
Earnings of Production Employees*	\$794.37	\$807.71	▼ -1.6%	▲ 3.5%

Source: Bureau of Labor Statistics, data compiled by CEDBR and seasonally adjusted

*Manufacturing Weekly Average

WSU Leading Index of Economic Activity

The leading index continues to indicate a decrease in economic activity, from current levels, through the beginning of the New Year. Although, the predicted change is somewhat less than it was in late summer. This can mostly be attributed to a stabilization in both the National Industrial Production Index and the International Leading Index. The slight decline in the Aircraft Production Index was partially offset by the improvement in the Kansas Leading Index.

WSU Wichita Leading Conditions Index

	Sep-16	Aug-16	Monthly % Change	Annual % Change
Leading Conditions Index	95.5	95.6	▼ -0.1%	▲ 0.4%
Predicted change*	▼ -0.54	▼ -0.94	-	-
Index Components				
Aircraft Production Index	107.0	108.8	▼ -1.7%	▼ -1.7%
Kansas Leading Index	-1.4	-2.3	▲ 0.9%	▼ -2.2%
National Industrial Production Index	104.2	104.2	▬ 0.0%	▼ -1.0%
International Leading Index	99.7	99.7	▬ 0.0%	▼ -0.3%

Source: Board of Governors of the Federal Reserve System, Federal Reserve Bank of Philadelphia, Organization for Economic Co-Operation and Development (OECD), data compiled by CEDBR

*Predicted change in the level of economic activity over the next six months from the current level of economic activity

Data can be accessed directly at: www.kansaseconomy.org/local-indices